

# INSTALLATION INSTRUCTIONS FOR FUEL LEVEL SENDER

## CAUTION DISCONNECT BATTERY CABLE BEFORE INSTALLING FUEL LEVEL SENDER

**STEP 1.** Determine required float arm position. (Unless otherwise specified, senders are assembled for Right Hand float arm position.) Position is defined by comparing the screw hole pattern on the tank to Figure 1 below.

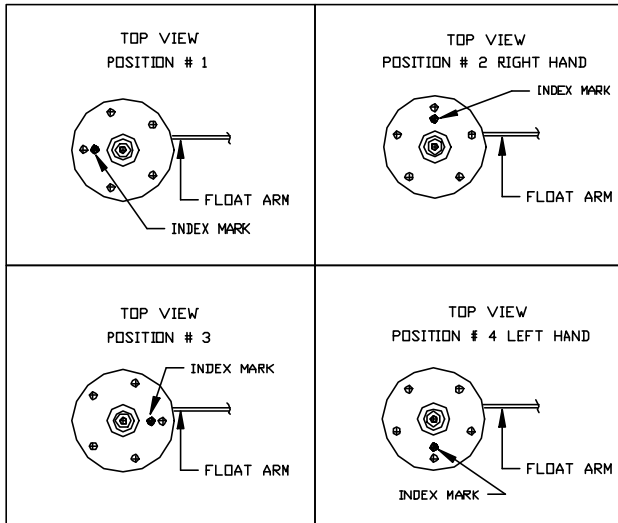


FIGURE 1.

**STEP 2.** If necessary to reposition float arm for left hand positioning loosen lower 10/32 hex nut and rotate index hole 180°. If hex nut is removed from stud, care must be taken that the sealing hardware is correctly reassembled onto stud. Tighten hex nut to 16 – 20 inch pounds. See buildup of hardware above (Figure 1).

**STEP 3.** Remove rheostat housing and cut support arm to length, being careful not to damage the housing (Figure 2). Recommended that  $\frac{1}{2}$  tank depth +  $1 \frac{5}{8}$ " be provided.

**STEP 4A.** Care should be taken in handling the float arm when the float has been installed. Any damage to the float will cause the sender to be in error. "B" dimensions for tank depths of 6" to 24" are found in the table on the next page.

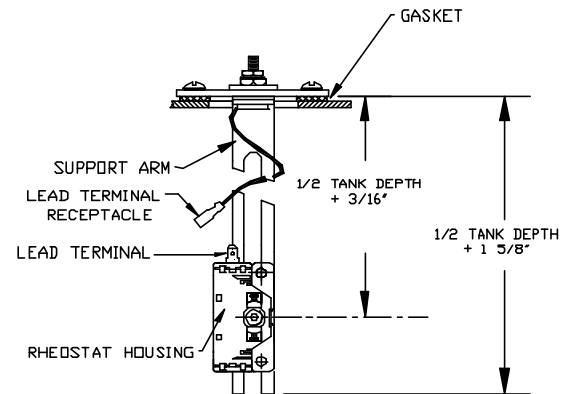
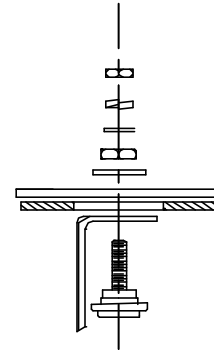


FIGURE 2.

### LIMITED WARRANTY

Maxima Technologies shall warrant its products against defects in workmanship or materials for a period of twenty four (24) months upon verification of purchase date from the original seller (i.e. Maxima) provided that these products are installed and operated according to the purpose for which they were intended, designed and specified. "Products" include gauges, meters, senders, clusters and any related accessories. This warranty will not cover items that are incorrectly installed, misused or abused by the customer or end-user as would be uncovered upon examination.

Printed in USA



1811 Rohrerstown Road, Lancaster, PA 17601  
Phone: 717-581-1000 Fax: 717-569-6372  
www.maximatechnologies.com

A	B	A	B	A	B	A	B
6	2 3/4	11	5 3/4	16	8 3/4	21	12
6 1/2	3	11 1/2	6	16 1/2	9 1/4	21 1/2	12 1/4
7	3 1/4	12	6 1/4	17	9 1/2	22	12 3/4
7 1/2	3 1/2	12 1/2	6 1/2	17 1/2	9 3/4	22 1/2	13
8	4	13	7	18	10 1/4	23	13 1/4
8 1/2	4 1/4	13 1/2	7 1/2	18 1/2	10 1/2	23 1/2	13 1/2
9	4 1/2	14	7 3/4	19	10 3/4	24	14
9 1/2	5	14 1/2	8	19 1/2	11		
10	5 1/4	15	8 1/4	20	11 1/2		
10 1/2	5 1/2	15 1/2	8 1/2	20 1/2	11 3/4		

**A. Tank Depth**

**B. Float Arm Bend Dimension**

**STEP 4B.** Cut float arm to "B" + 0.75". (Example: A float arm for a 21" tank should be cut off at 12.75") Remove burrs. Bend float arm sharply at right angle (90°) when the float is flat in the horizontal position per the dimensions below (Figure 3). Use Template "A" below as a guideline. Insert this hook into the wiper bracket hole as shown in Figure 3 and snap firmly in place, being careful not to damage plastic wiper bracket. Straighten float arm if necessary.

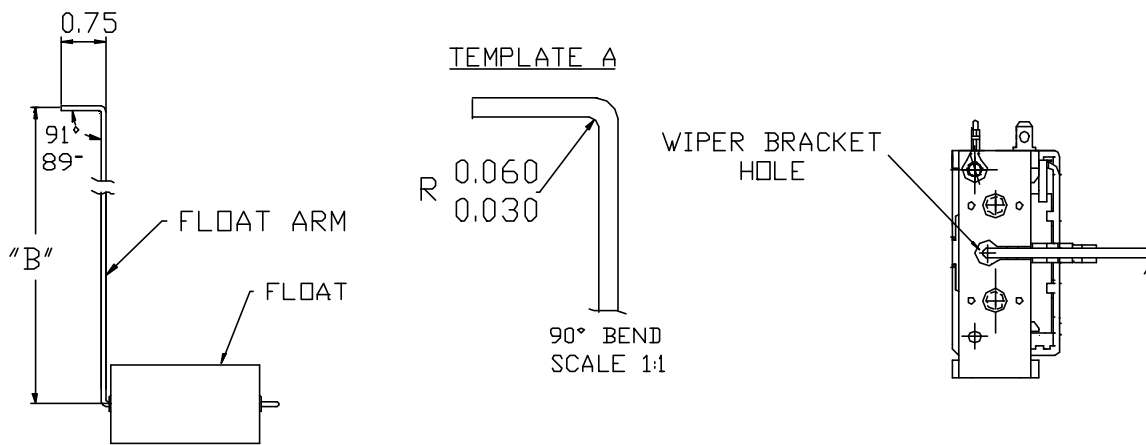


FIGURE 3.

- STEP 5.** Reinstall rheostat housing assembly at 1/2 tank depth + 3/16" (measured from the bottom of the mounting flange as in Figure 2). Tighten the two screws in rheostat housing to 12 – 18 inch pounds.
- STEP 6.** Connect lead terminal receptacle to the lead terminal (Figure 2). Being sure that the receptacle is seated correctly (snapped) on the terminal.
- STEP 7.** Carefully position gasket under mounting flange by moving over float, float arm, supporting arm, and resistor housing.
- STEP 8.** Install completed sender in tank by threading the sender, float end first, into the tank mounting hole. Align sender mounting flange screw hole pattern with mounting screw hole pattern.
- STEP 9.** Install all 5 mounting screws and fasten securely. Sender must be grounded to metal tank for proper operation. Ground through staple in gasket provided or through a wire connected between metal flange and metal chassis of the vehicle. For installation on plastic tanks, sender must be grounded through a wire from the mounting flange to the chassis of the vehicle.