

STEWART-WARNER

GAUGES



A QUICK REFERENCE CATALOG

The world's best known and most used automotive instruments, Stewart-Warner Gauges are built in the USA to be the best quality available anywhere. All are backed by Stewart-Warner's exclusive full 2-year warranty.

The three best-selling gauge lines in automotive history are featured in this catalog, along with the sensors and accessories needed for installation in most vehicles. Also listed are special-purpose gauges, safety warning devices and fuel pumps.







Mechanical Gauges

Deluxe and Heavy Duty gauges use Bourdon tube center gear mechanisms and Standard gauges use diaphragm mechanisms. All withstand heavy vibration and changes in ambient temperature. Mechanical pressure and vacuum gauges require tubing kits, sold separately (see page 3).

DELUXE gauges have black dial faces with white graduations and pointers, and self-contained, internal lighting. Light kits included. Bezels are flat, bright stainless steel. Cases are 2 1/16" (zinc dichromate coated steel) or 2 5/8" (zinc dichromate coated steel) in diameter.

HEAVY DUTY gauges have black dial faces with white graduations and pointers, and self-contained, internal lighting. Light kits included. Bezels are raised steel or stainless steel, painted black with satin accent. Cases are 2 1/16" (zinc dichromate coated steel) in diameter.

STANDARD gauges have black dial faces with white graduations and pointers, non-illuminated. Bezels are flat, bright stainless steel. Cases are 2 1/2" (steel) in diameter.

MECHANICAL GAUGES		 DELUXE		 HEAVY DUTY		 STANDARD	
		2 1/16" Case	2 5/8" Case				
	Range						
	Pressure						
	1-10 psi fuel	82319			284-E		
	1-15 psi fuel			82405			
	2-30 psi fuel	82320					
	2-30 psi manifold	82321					82207*
	0-50 psi						82208*
	0-80 psi	82322					82209*
5-80 psi oil							
0-100 psi							
5-100 psi oil	82323		82406	284-D			
10-150 psi oil			82407				
10-150 psi air	82329		82408	284-N			
10-150/10-150 psi dual air	82332			82331			
10-200 psi oil	82324			284-P			
10-200 psi fuel	82325						
20-300 psi trans.	82120			284-R			
25-400 psi trans.	82121			284-S			
	Temperature						
	100-250 °F						82210-36", -48",* -60", -72", 144"
	100-265 °F water	82326-48", 60", 72", 96", -120", -144", 216", -288", -360"	82409-60", -72", -144"	284-B-36" -72", -144"			
	140-325 °F oil	82327-60", -72", -96", -144", -216"	82410-60", 72"	284-C-36", -72", -144"			
0-150 psi/110-260 °F press./temp.				82336-96"			
	Vacuum						
	0-30" Hg	82328	82411				
	2-30" Hg			284-AH			
	0-30" Hg/0-15 psi turbo			284-BF			
0-30" Hg/0-40 psi turbo			284-F				
0-30" Hg Motor Minder			82301				

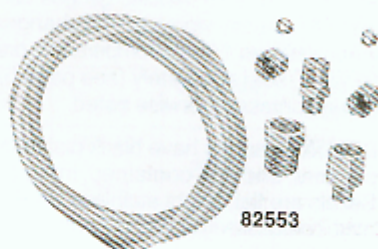
*Cannot be lighted

Installation Accessories

Tubing Kits:

No. 82553 Tubing Kit for installation of mechanical vacuum or pressure gauges in most American cars. Contains 6 ft. nylon $\frac{1}{8}$ " tubing, with fittings, $\frac{1}{8}$ " PT connection with adapter for $\frac{1}{4}$ " PT oil gallery, instructions.

No. 366-HM Tubing Kit as above, but with 16 ft. of tubing for rear or mid-engine cars.



Adapter Kits:

Adapter kits permit use of the tubing kits shown above in import cars or trucks using metric fittings.

No. 82555—Adapter nuts to convert fittings for metric M10 X 1K threads. Used on Alfa Romeo, Audi, BMW, Volkswagen and other European imports.

No. 366-ST—Adapter nuts to convert fittings for metric M10 X 1K, M12 X 1.5 and M14 X 1.5 threads. Used in Alfa Romeo, Audi, BMW, Fiat, Mercedes-Benz, Opel, Peugeot, Porsche, Renault, Volkswagen, Volvo and other European imports.



No. 82561—Adapter nuts to convert fittings for use with $\frac{1}{8}$ "-28 BSP male threads; includes $\frac{1}{8}$ "-28 BSP female adapter for applications requiring tee fittings. Used on Datsun (Nissan), Honda, Subaru, Toyota and other Japanese imports.



Rubber Tubing Kit for Vacuum Gauges:

No. 82562 includes 6' of rubber tubing, "T" fitting connector and hose fitting for installation of any Stewart-Warner vacuum gauge or motor minder in most applications.

Temperature Gauge Sender Adapter Nuts:

Stewart-Warner mechanical temperature gauges are supplied with sender adapters using $\frac{1}{2}$ " PT threads. For other sizes or for use in imports with metric threads, other adapters are required.



Outside Thread	Part No.	Sealing Gasket No.
$\frac{1}{4}$ " PT*	428819 (steel)**	—
$\frac{3}{8}$ " PT	72446 (steel)**	—
$\frac{1}{2}$ " PT	412208 (brass)	—
$\frac{3}{8}$ "-18	95527 (brass)	—
M14 X 1.5*	834078 (steel)***	54845***
M16 X 1.5	825126-2 (steel)***	834104***
M18 X 1.5	825127-2 (steel)***	48958***

*—For tubing less than 120" in length

**—Included in Adapter Nut Kit No. 366-NK

***—Included in Metric Adapter Nut Kit No. 82512

Replacement Lighting Kits:

No. 366-FK, exact duplicate of lighting kit supplied with Deluxe and Heavy Duty Gauges.

Pressure Sensitive Labels:

Permit changing of nomenclature for pressure or temperature gauges.

No. 823705 for 2 $\frac{5}{16}$ " Pressure Gauges, psi. Labels: Water; Oil; Trans.; Fuel.

No. 823708 for 2 $\frac{1}{16}$ " Pressure Gauges, psi. Labels: Water; Oil; Trans.; Fuel.

No. 824587 for 2 $\frac{1}{16}$ " Pressure Gauges, psi. Labels: Oil; Fuel; Clutch; Torque Converter.

No. 823706 for 2 $\frac{5}{16}$ " Temperature Gauges, °F. Labels: Water; Oil; Trans.; Axle.

No. 823707 for 2 $\frac{1}{16}$ " Temperature Gauges, °F. Labels: Water; Oil; Trans.; Axle.










Electric Gauges

All Stewart-Wamer electric gauges use Bi-Torque mechanisms, and withstand heavy vibration and changes in ambient temperature and voltage surges. Electric temperature, pressure and fuel gauges require senders, sold separately (see page 5). All gauges 12 volt negative ground unless otherwise noted.

DELUXE gauges have black dial faces with white graduations and pointers, and self-contained, internal lighting. Light kits included. Bezels are flat, bright stainless steel. Cases are 2 1/16" (zinc dichromate coated steel) or 2 5/16" (zinc dichromate coated steel) in diameter.

HEAVY DUTY gauges have black dial faces with white graduations and pointers, and self-contained, internal lighting. Light kits included. Bezels are raised steel or stainless steel, painted black with satin accent. Cases are 2 1/16" (zinc dichromate coated steel) in diameter.

STANDARD gauges have black dial faces with white graduations and pointers, non-illuminated. Bezels are flat, bright stainless steel. Cases are 2 1/16" (steel) in diameter.

ELECTRIC GAUGES		 DELUXE		 HEAVY DUTY	 STANDARD
		2 1/16" Case	2 5/16" Case		
	Range Pressure 0-16 psi fuel 0-80 psi oil 0-100 psi oil 0-150 psi air	82333 82304 82305		284 AM 284 AE 284 L 284 T	
	Temperature (°F) 100-230° water 100-240° water 100-280° water 100-600° cyl. head 140-320° oil 300-1,500° pyrometer	82306 82307 82308 82335		284 AF 284 J 284 AK 284 K 82334	
	Fuel Level E-1/2-F E-1/2-F (S-W 240Ω) E-1/2-F (GM 90Ω) E-1/2-F (Ford, Chrysler 73Ω)	82303 82341 82342	82413	284 M 284 BS 284 BR	82211*
	Ammeter 20-0-20 30-0-30 60-0-60 60-0-60 100-0-100 150-0-150	82310 82311 82313	82404	284 A 284 AB ① 284 AA ② 284 AD ③	82201* 82200* 82202*
	Voltmeter 10-16 V Neg./Pos Gnd. 20-32 V	82309		284 H 284 AJ	
	Clock	82339		82338	

① Requires Remote Shunt 813489 (order separately)

② Requires Remote Shunt 407616 (order separately)

③ Requires Remote Shunt 413717 (order separately)

* Cannot be lighted

Installation Accessories

Electric Temperature Sender Selection Chart

Gauge Number	Style	Range—Type	Univ. (1/8, 1/4, 3/8 or 1/2 PT)	1/8 PT	1/4 PT	3/8 PT	1/2 PT	Drain Plug 1/2-20	Univ. Metric
284-J	HD	100-280 Water	280-ED	334-H	334-AA	334-AB	334-AD	—	82510
284-K	HD	140-320 Oil	280-EE	—	—	—	—	280-EH	—
284-AF	HD	100-230 Water	280-EC	—	334-N	334-P	334-R	—	—
284-AK	HD	100-320 Cyl Hd	280-EK	—	—	—	—	—	—
82306	Deluxe	100-240 Water	280-EA	362-CZ	362-AN	362-AJ	362-AH	—	—
82307	Deluxe	100-280 Water	280-ED	334-H	334-AA	334-AB	334-AD	—	82510
82308	Deluxe	140-320 Oil	280-EE	—	—	—	—	—	—
82334	HD	300-1500 Pyro	82505	—	—	—	—	280-EH	—
82335	Deluxe	300-1500 Pyro	82505	—	—	—	—	—	—

Metric Electric Temperature Sending Kit—Model 82510

For use with 284-J (HD) or 82307 (Deluxe), 100°-280°F water temperature gauges. Kit includes 12v electric sender with 10mm threads and adapters for 14mm, 16mm, and 18mm threads. Used on Alfa-Romeo, Audi, BMW, Datsun, Fiat, Mazda, Mercedes-Benz, Opel, Peugeot, Toyota, Volkswagen, Volvo, and others.



Thermocouple for Pyrometers—Model 82505

To be used with either model. 1/4" NPTF connection with 2 1/2" probe tip projection is non-adjustable. Probe wire measures 17" in length. For longer lengths choose from:

Part No. 82556-1 5' Extension wire.

Part No. 82556-3 20' Extension wire.

Part No. 82556-2 10' Extension wire.



Senders for Electric Pressure Gauges

Dial Scale	Voltage	Part No.
5-80	12V	279-A
5-100	12V	279-B
5-150	12V	279-C
0-16	12V	82504

For Adapter Kits, Pressure Sensitive Labels and Lighting Kits, see page 3.

Resistors for Special Voltages

Description	To adapt 12v gauge for use with 24vdc power source	To adapt 12v gauge for use with 32vdc power source
For 12v Gauge with Bi-Torque mechanisms (including HD and 82000 series Deluxe).	829525-2	829525-8
For Pyrometers 82334 and 82335	829525-9	—



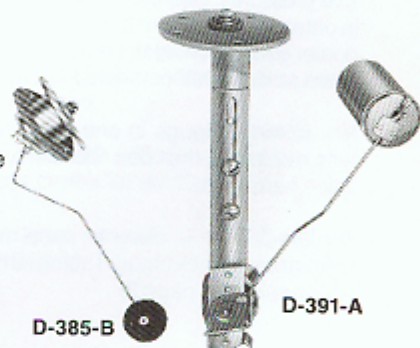
IMPORTANT NOTE: The senders on this page are for use with gauges manufactured by Stewart-Warner. They are not for use with gauges made by any other company.

Stewart-Warner Manufactured Instruments will provide system accuracy only when used with Stewart-Warner Senders. Do not use Stewart-Warner Instruments with senders of other than Stewart-Warner origin as accuracy will be adversely affected.

Senders for Fuel Level Gauges

Choosing Fuel Level Senders

Holes in the tank unit bracket plate are not evenly spaced. The distance between two of the holes is greater than between any other two. When viewing the bracket plate with the widely-separated holes nearest you, the float arm will swing left if it is a lefthand tank unit or right if it is a righthand tank unit. If there is more room in the tank to the left of the tank unit mounting location, use a tank unit that swings to the left and vice versa.



Part No. (12v)	Description
D-385-B	6"-12" depth, LH arm
D-385-C	6"-12" depth, RH arm
D-391-A	10"-15" depth, LH arm
D-391-B	10"-15" depth, RH arm
D-391-C	15 1/2"-24" depth, LH arm
D-391-D	15 1/2"-24" depth, RH arm

Replacement floats: 411290 brass for 391 series, 427410 plastic for 385 series.

Part No. 366-LP Order fuel level sender (tank unit) installation kit separately. Kit contains flange 93310, screws, gasket 72030, and washers.

Special Purpose Gauges

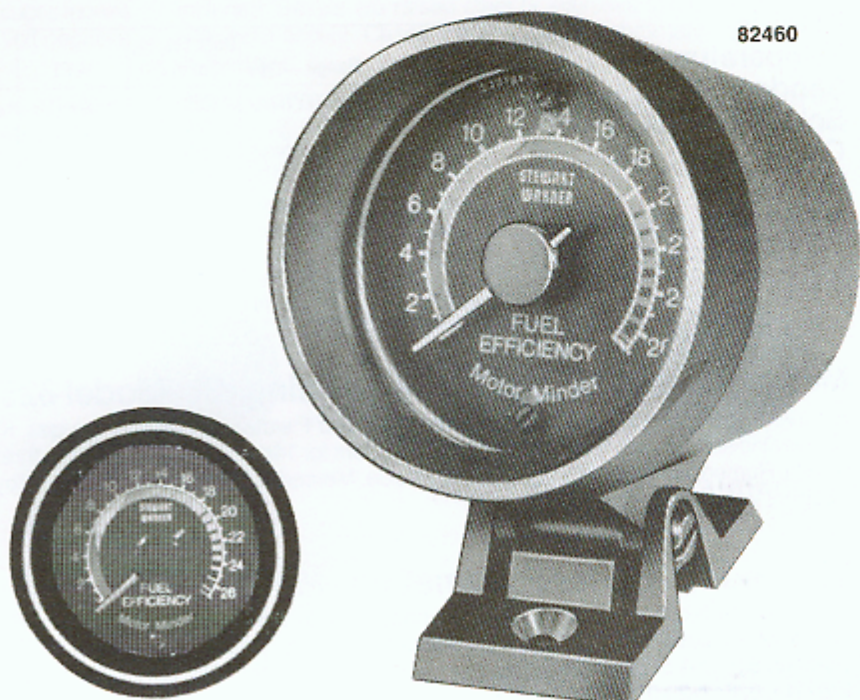
Motor Minder

Accurate vacuum gauge is an aid to obtaining maximum fuel economy, and is also useful for checking the mechanical condition of the engine. Features a Bourdon tube center gear mechanism, color-segmented 270° pointer sweep* and self-contained Transoptic lighting. Includes all parts necessary for installation.

No. 82460—Gauge in one-piece housing for surface mounting. Includes gauge vacuum tubing and T fitting connector.

No. 82301—2 1/8" diameter panel mount gauge with satin-accent black bezel, vacuum tubing and T fitting connector.

*Reading scale of 0-30 in. Hg.,



82301

82460

Turbo Gauge

Monitors turbocharger boost pressure, helps prevent engine or turbo damage by warning of excessive pressures; plus measures engine vacuum to aid in obtaining maximum fuel economy. Bourdon tube center gear mechanism, reads on color coded, two-sided scale.** Self-contained, Transoptic lighting.

No. 82461—Gauge in one-piece housing for surface mounting. Includes vacuum tubing and installation hardware.

No. 284-BF—2 1/8" diameter panel mount gauge with satin-accent black bezel. Tubing kit must be ordered separately (see page 2).

**Left-hand (green coded) scale reads engine vacuum in a range of 0-30 in. Hg.; right-hand (orange coded) scale reads turbo boost in a range of 0-15 psi.



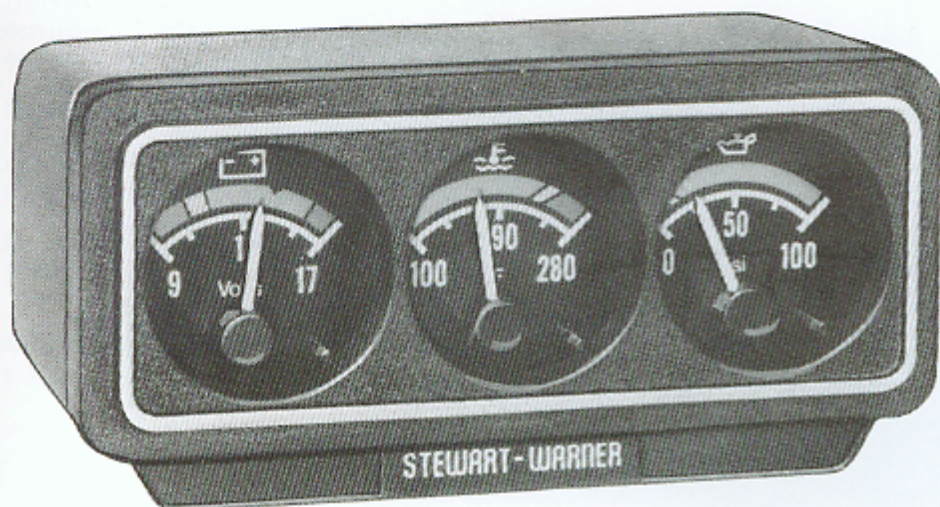
284-BF

82461

Mini-Panels

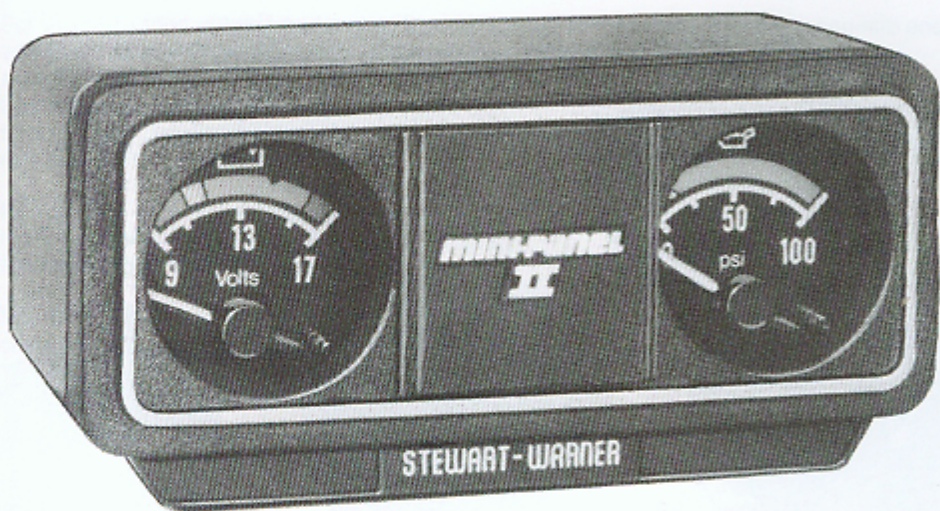
Pre-assembled gauges mounted in surface-mount panels for easy installation. Complete panel measures only 4½" w by 2" h by 2" deep. Complete with all necessary senders and adapters for installation on

AMC, Chrysler, Ford, GM autos. 2 gauge panel also includes metric adapters for use with import cars (available separately for 3 gauge panel).



No. 82459—Three gauge panel includes voltmeter, water temperature and oil pressure gauges.

No. 830051—Replacement gauges for above.



No. 82470—Two gauge panel includes voltmeter and oil pressure gauges.

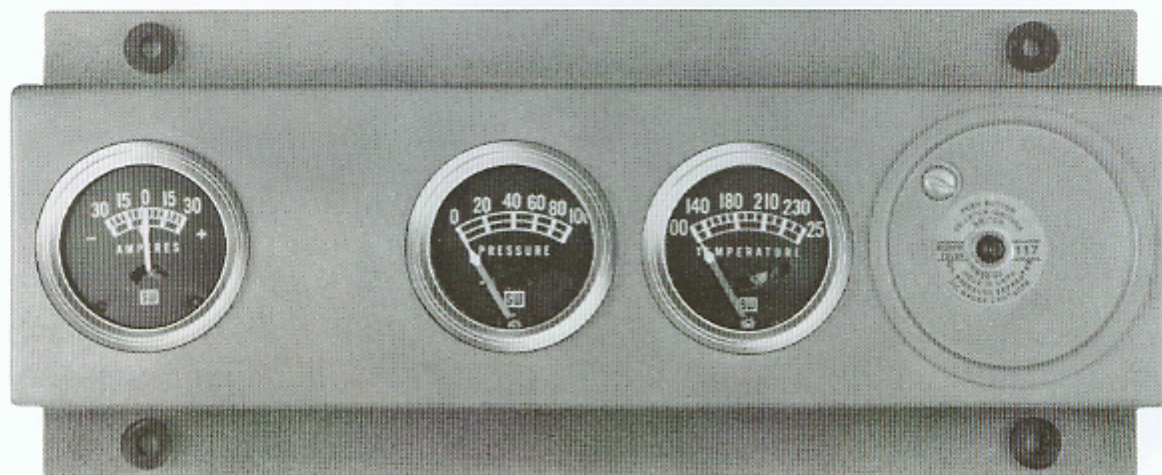
No. 832863—Replacement gauge cluster for above.

Special Purpose Instruments

Engine Safety Panel—With Automatic Shut-off

The Stewart-Warner Safety Panel is designed to monitor the operation of unattended or remotely controlled gasoline or diesel engines. Typical applications are irrigation pump stations, generators, air compressors and refrigeration systems. Gauges can be preset to selected limits and will shut down the engine if those limits are exceeded.

The Safety Panel includes an ammeter, pressure gauge and water temperature gauge, mounted in a rugged, weatherproof housing together with manual stop switch and reset button. Complete with 48" wire leads, wiring diagram and operating instructions.



D-524-DF

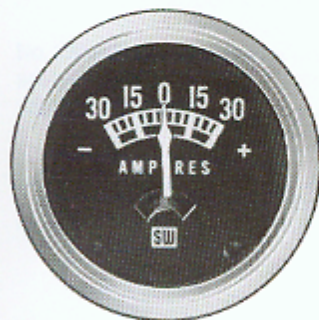
Replacement Safety Gauges and Switch

No. 82200 Ammeter. Scale 30-0-30 with silicone damped pointer. 2½" case, bright stainless steel bezel.

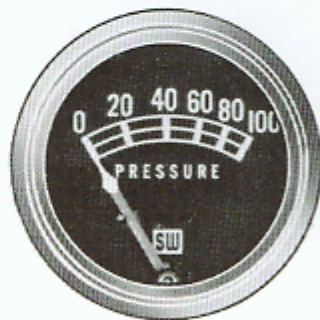
No. 444701 Safety Pressure Gauge. Scale 0-100 lbs with limit preset lever. 2½" case, bright stainless steel bezel. ½" PT connection.

No. 442412 Safety Water Temperature Gauge. Scale 100-250°F. with limit preset lever. 2½" case, bright stainless steel bezel. Includes 48" tubing and ½" PT connection (72" and 144" tubing also available).

No. 366-SP Replacement Stop Switch and Reset.



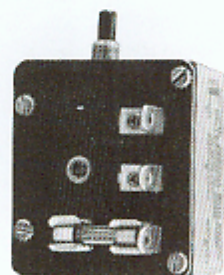
82200



444701



442412



366-SP

Hand Held Portable Tachometer

Accurately measures rotary speeds in range of 100-4000 RPM, wherever a shaft end is accessible. Tachometer tip is simply pressed against end of shaft...speed is read directly from face dial. Use wherever rotary speeds need to be measured or checked, in the shop or on the farm, such as pumps, compressors, grinders, tractor power takeoffs, combines, etc.

No. 82682 Portable Tachometer. Includes cone tip 96798 for center hole shafts, cup tip 96799 for shafts with flat or convex ends. Replacement tips available. Tachometer is 3" in diameter, 4" in length.

No. 412850—12-inch extension shaft for hard-to-reach points.



82682



412850

96799



96798

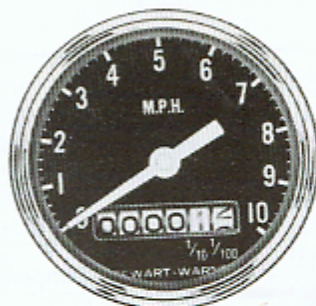


Farm Tractor/Low Speed Vehicle Speedometer

For use in tractors, spray rigs and other low-speed vehicles, this special speedometer is calibrated for accurate measurement of speed from 0-10 MPH. Driven from the center of tire tread, for true indication of speed and distance travelled regardless of terrain, engine RPM or transmission ratios.

No. 550-KM—Low Speed Speedometer, black dial face with white graduations and pointer, internal lighting included. Case is 2.95" in diameter (steel).

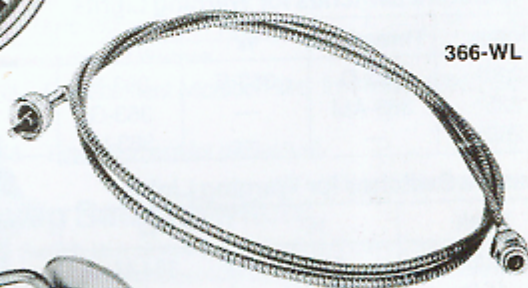
No. 366-WL Kit—Complete Low Speed Speedometer Kit includes 550-KM Speedometer, flexible 108" long shaft No. 446616, Mounting and Drive Equipment, Light Kit and installation instructions.



550-KM



366-WL



Warning Signals

Audio-Visual Engine Warning Systems:

Combination light/buzzer provides early warning of high engine coolant temperature and/or low oil pressure. Signal lights and sounds as system check each time engine is started. After operating oil pres-

sure is reached, system will sound and light if temperature climbs above limits or pressure drops too low.

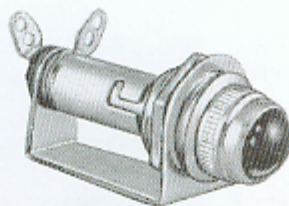
No. 366-TJ Complete system includes warning device, 364-L oil pressure sender switch, 363-F water temperature sender switch, nameplate and four 1/4" speed grip electrical connectors. 12 volt systems only.

No. 825104 Warning Device Only. Able to react to multiple or individual switches. Order as extra warning device with kit above if separate signals are desired for pressure and temperature. 12 volt systems only.



Warning Light:

No. 420215 Warning light may be used with any pressure or temperature switch to provide bright visual signal. 12v systems only.



Air Pressure Gauge with Warning Light:

No. D-368-P Heavy-Duty mechanical gauge uses a Bourdon tube center gear mechanism and includes a warning light. Dial scale 5-150 psi., 3 3/8" diameter steel case with non-reflecting satin chrome bezel.



Accessories:

Temperature Switches for Warning Lights

Temp.	Thread 1/4"	3/8"	1/2"
200°	363-D	363-E	363-F
225°	363-AM	—	363-G
250°	—	—	363-W

Pressure Switches for Warning Lights

Limit	1/8"	1/4"
6 lb	364-L	364-M
15 lb	364-K	—



Cross Reference for Replacement of Stewart-Warner O.E.M.

O.E.M. No.	S-W No.	O.E.M. No.	S-W No.
------------	---------	------------	---------

Temperature Switches

363-H	363-F	363-AP	363-F
363-J	363-F	438031	363-E
363-N	363-E	438054	363-F
363-P	363-F	438070	363-F
363-T	363-F	438086	363-E
363-AL	363-D		

Pressure Switches

364-H	364-L	364-AR	364-K
364-N	364-L	364-AM	364-K
364-P	364-L		
364-X	364-L	364-AN	364-L
364-Y	364-K	364-AR	364-L
364-AA	364-M		

Panels & Fuel Pumps

Mounting Panels

Stewart-Warner accessory mounting panels are the simplest way to add gauges to any automobile or other vehicle. Sturdy, easy-to-mount panels are available to hold one, two, three or four gauges.

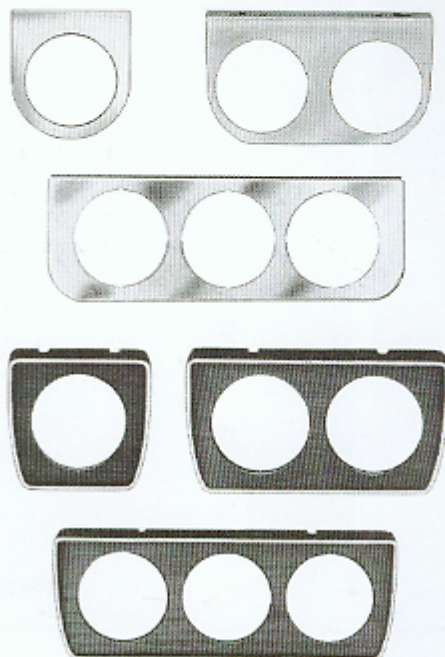
Bright Chrome Steel Panels:

No. of Gauges	2 1/16" Gauges Part No.	2 5/8" Gauges Part No.
1	D-817825	D-811569
2	D-814143	D-813877
3	D-811653	D-813642
4	D-813878	

Die Cast Panels (Black or wood grain):

No. of Gauges	2 1/16" Gauges Part No.
1	289-B
2	289-C
3	289-D

Die cast panels above are supplied in suede black finish, include wood grain adhesive overlay.



Electric Fuel Pumps

Stewart-Warner Electric Fuel Pumps are engineered to assure quick starts and eliminate fuel delivery problems like surging, flooding or starvation.

Model 82050 Series:

Powerful piston-type pump has only one moving part for highly reliable operation. Two built-in filters eliminate need for other in-line filtration: Microbon filter dissipates water; magnetic filter traps metallic particles. Gas line connection 1/4" internal PT.



Model 235 Series:

Standard-duty, diaphragm (bellows) type pump, equipped with built-in screen filter. This pump type should *not* be used with gasohol or other alcohol fuels.



Fuel Pump Applications:

Part No.	Engine HP	Electrical Reg.	Rated psi	Delivery*	
				1 psi	3 psi
235-A	Up to 225	12V pos/neg	5	26	11
235-B	Up to 150	6V pos/neg	5	18	9
82050	Up to 350	12V neg	7	34	29
82051	Up to 350	12V neg	5	31	24
82052	Up to 350	12V pos/neg	7	31	24
82054	Up to 350	24V pos/neg	7	31	24

*Gallons per hour according to S-W lab test.

Model 82053—Replacement Microbon filter for Model 82050 Series Pumps.

Model 82058—Filter element for diesel fuel.

Fuel Pump Safety Switch:

No. M-4012 Switch is a single pole, double throw pressure switch which can be wired into the electrical system to shut off the fuel pump when engine oil pressure falls below 4psi. This would shut off the pump if the engine should stop running for any reason, even if the ignition switch remained on.

DISTRIBUTION AND SERVICE CENTERS

- Atlanta, Georgia**
5246 Snapping Woods Drive
Decatur, Ga. 30032
(404) 981-2770
- Baltimore-Washington, D. C.**
Phone (301) 252-9300
Sales • Service • Warehouse
23 W. Aylesbury Rd.
Balt. (Timonium), Md. 21093-0187
- Billings, Montana** 59102
811 2nd Ave. N.
(406) 259-4786
- Birmingham, Alabama** 35210
4727 Alton Court
(205) 966-0105
- Boston, Massachusetts**
110 Shawmut Rd.
Canton, MA 02021
(617) 828-6030
- Buffalo, New York**
2500 Walden Ave.
Cheektowaga, N.Y. 14225
(716) 685-3850
- Charlotte, North Carolina** 28208-3607
2900 Interstate St.
(704) 394-0126
- Chicago, Illinois**
9250 Ivanhoe St.
Schiller Park, Illinois 60176
(312) 671-1380 (Schiller Pk.)
(312) 589-1550 (Chicago)
- Cincinnati, Ohio** 45223
4046 Hamilton Ave.
(513) 681-2323
- Cleveland, Ohio**
25971 Cannon Rd.
Bedford Heights, Ohio 44146
(216) 439-7955
- Cleveland, Ohio**
Cleveland Ignition Co.
10646 Leuer Ave.
Cleveland, Ohio 44108
(216) 851-0000
(Instruments only)
- Dallas, Texas** 75229
2525-320 Royal Lane
(214) 241-7777
- Denver, Colorado** 80223
1001 W. Arizona Ave.
(303) 744-3471
- Des Moines, Iowa** 50313
5694 N.E. 17th St.
(515) 266-3164
- Detroit, Michigan**
1009 W. Maple Rd.
Clawson, Mich. 48017
(313) 435-2200
- El Paso, Texas** 79925
1220 Airway Blvd.
(915) 778-3366
- Houston, Texas** 77036
7540 Harwin Dr.
(713) 780-3370
- Indianapolis, Indiana** 46219
2951 N. Webster Ave.
(317) 547-5265
- Jacksonville, Florida** 32205
1057 Ellis Rd. North
Box #7
P.O. Box 60549 (32236)
(904) 783-0600
- Kansas City, Missouri** 64120
6004 Connecticut Ave.
(816) 483-9666
- Los Angeles, California** 90015
333 W. Washington Blvd.
(213) 748-0261
- Louisville, Kentucky** 40208
1475 S. Floyd St.
(502) 637-4707
- Memphis, Tennessee** 38106
2315 So. Elvis Presley Blvd.
(901) 942-3257
- Milwaukee, Wisconsin**
2720 So. 163rd St.
New Berlin, Wis. 53151
(414) 786-1645
P. E. Weber Inc.
738 N. 8th St. 53233
(414) 276-8140
(Instruments only)
- Minneapolis, Minnesota** 55413
740 Northeast Harding St.
(612) 331-8464
- Nashville, Tennessee** 37210
1650 Elm Hill Pike Suite #6
(615) 871-0230
- New Orleans, Louisiana**
5620 Salmen St.
Harahan, La. 70123
(504) 733-6133
- New York/New Jersey**
N.Y.: (212) 349-4050
N.J.: (201) 687-1100
Sales • Service • Warehouse
1480 Ridgeway St.
Union, New Jersey 07083
- Omaha, Nebraska** 68137
10901 "I" Street
(402) 339-7900
- Philadelphia, Pennsylvania** 19123
930 N. Eighth St.
(215) 922-5430
- Phoenix, Arizona** 85005
2112 N. 23rd Ave.
(602) 258-5721
- Pittsburgh, Pennsylvania**
1650 Main St.
Sharpsburg, Pa. 15215
(412) 782-4495
Speedometer Service Co.
4740 Baum Blvd. 15213
(412) 621-2900
(Instruments only)
- Portland, Oregon** 97210
3323 N.W. Yeon Ave.
(503) 227-3501
- St. Louis, Missouri** 63114
1805 Belt Way Drive
(314) 428-9907
- Salt Lake City, Utah**
4425 S. 500 West, Suite C
Murray, UT 84123
(801) 261-5111
- San Antonio, Texas** 78207
1523 N. Laredo
(512) 735-4666
S. X. Callahan Co.
824 S. Laredo 78207
(512) 224-1525
(Instruments only)
- So. San Francisco, Cal.** 94080
183 Beacon St.
(415) 583-6600
- Seattle, Tukwila, Wash.** 98168
1260415 Intenurban Ave. South
(206) 433-0804
- Toledo, Ohio**
Toledo Auto Electric Inc.
1717 Monroe St. 43624
P.O. Box 737 43601
(419) 243-7104
(Instruments only)
- Tulsa, Oklahoma** 74145
7655 E. 48th St.
(918) 663-3700

INTERNATIONAL OFFICES AND FACILITIES

- Australia**, Brookvale, N. S. W. (2100)
Alemite Lubricup Pty. Ltd.
2 William Street
- Canada**, Belleville, Ontario K8N 5B8
Stewart-Warner Corp. of Canada, Limited
349 MacDonald Avenue
- England**, Tyne & Wear—NE29-7UE
Stewart-Warner Ltd.
West Chilton Trading Estate
North Shields
- Germany**, Hilden (401)
Stewart-Warner, Alemite GmbH
Stockhausstrasse 9
- Mexico**, Monterrey, N.L.
Industrial Alemex, S.A.
Tapu 836 Oriente

SYMBOL OF



EXCELLENCE

**STEWART-WARNER
INSTRUMENTS**

STEWART-WARNER CORPORATION

1826 DIVERSEY PARKWAY - CHICAGO, ILLINOIS 60614

GILMORE DISTRIBUTING CO., INC.
1011 AUSTIN ST.
SOUTH HOUSTON, TX. 77587
713-946-9133 & 946-9134