

Catalog 390
Effective Feb. 1987
Marine
Products

SYMBOL OF



EXCELLENCE

STEWART-WARNER

marine products

Stewart-Warner...chart your course with the leader in instruments since 1903. Choose from the industry's most complete line of tachometers, speedometers, and gauges. Backed by 44 factory branch and service center offices and 320 factory-authorized service depots when you need help.

Stewart-Warner quality offers everything you need to save time and money with confidence.

DELUXE INSTRUMENTS

The best in the world. The same quality instruments used by more winning Indy 500 drivers than all other racing instruments combined. The traditional boat owner will appreciate the polished chrome bezel, and black face dial with large white graduations and white pointer. All Deluxe instruments are illuminated for easy, night-time visibility. They are ideal for new or replacement installations, where traditional marine quality is the only consideration.

FACE DIAL is black with white graduations and pointer.

BEZEL is chrome-plated.

CASE is brass, 2 1/16" in diameter for gauges, 3 3/8" for tach and speeds.

LIGHTING is internal and self-contained on all 82000 series instruments.

ELECTRIC INSTRUMENTS feature vibration-resistant Bi-Torque® mechanisms. Electric pressure, temperature, and fuel level gauges require senders—order separately.

MECHANICAL INSTRUMENTS have vibration-resistant Bourdon tube center gear mechanisms. Mechanical pressure and vacuum gauges require tubing kits—order separately.

MOUNTING: Instruments come with mounting brackets and instructions.

TACHOMETERS

Part No.
82157
82162
82163

Adjustable Electrical Tach

Can be used with any 12 volt with Negative Grd. systems. 270° sweep. Set at factory for use with .5:1 take-off ratio (simple adjustment provides other ratios). Use sender **106-AW**.

82157 (0-3500rpm)

Electric Tachs Full 270° mechanism. Distributor type adjusted for 4, 6, and 8 cylinder engines, and outboards with 12 pole alternator.

82162 (0-6000rpm)

***82163** (0-8000rpm)

*Alternator only



Part No. 82157



Part No. 82163



Part No. 82162

TACHOMETERS

Part No.
82620
82622
82683
82684
82685
82686

Diesel Tachs These tachs have 270° dials. Factory set at 1/2:1. Fully adjustable for 1:1, 1 1/2:1, and 2:1 take-off ratios. (Rotation of engine take-off has no effect.) 12 V., Neg. Grd. All units require sender **82623** or **106-AW** (Pos. or Neg. Grd.)

82620 (Reg. Diesel Tach)

82622 (Has Hour Meter)

Mechanical Tachs These tachs have 250° dials—3/8"-18 connection with .105" square hole.

82683 (0-4000rpm) (.5:1 drive shaft ratio) (Includes odometer).

82684 (0-4000rpm) (.5:1 ratio).

82685 (0-4000rpm) (1:1 ratio) (Includes odometer) (Not shown).

82686 (0-4000rpm) (1:1 ratio) (Not shown).



Part No. 82620



Part No. 82683



Part No. 82622



Part No. 82684

NOTE: All electrical gauges that are 12 V., Neg. Grd. can be adapted to 24 V. DC using resistor **829525-2** and to 32 V. DC with resistor **829525-8**, unless otherwise noted.

SPEEDOMETERS

Part No.
82152
82153

Designed to match all Deluxe instrument tachs. They feature 250° movement for accurate readings.
82152 (10-45mph) (9-39 knots)
82153 (10-60mph) (9-52 knots)
(See page 9 for installation kit information.)



Part No. 82152



Part No. 82153

**SENDER
KITS**

Part No.
82623
106-AW

82623 Includes .187" diameter drive tip. One sender will operate two tachs. Use for models 82620 and 82622.

Drive Tips

82624 .203" dia. tang
82625 .187" dia. tang
82626 .152" dia. tang
82629 .104" square
82630 .150" square
82631 .1835" square
82632 .193" square

106-AW Connects to the Mech. take-off to convert mechanical movement into electrical signals.

Drive Tips

821870 .104"
821874 .152"
821875 .187"
821876 .203"



Part No. 82623



Part No. 106-AW

**WATER
TEMPERATURE**

Part No.
82114
82326
491 CT 600

Water Temperature 82114 (12 V., Neg. Grd.) 100-230°F. Requires sender 280 EA and 82503 for dual gauges.

82326 (Mech.) 100-265°F. Available in lengths of 48", 60", 72", 96", 120", 144", 288", and 360".

491 CT 600 100-265°F 600" (Not shown).



Part No. 82114



Part No. 82326

PRESSURE

Part No.
82113 82323
82116 82324
82322

Oil Pressure 82113 (12 V., Neg. Grd.) 5-80psi. Requires sender 353-Z or 353-AM for dual gauges.

82116 (12 V., Neg. Grd.) 5-100psi. Requires sender 279-B or 82501 for dual gauges.

82322 (Mech.) 5-80psi (Not shown).

82323 (Mech.) 5-100psi (Not shown).

82324 (Mech.) 10-200psi.



Part No. 82113



Part No. 82116



Part No. 82324

NOTE: All electrical gauges that are 12 V., Neg. Grd. can be adapted to 24 V. DC using resistor 829525-2 and to 32 V. DC with resistor 829525-8, unless otherwise noted.

PRESSURE

Part No.

82120 82320
82121 82325
82319 82333

Drive Oil Pressure 82120

(Mech.) 5-300psi.
82121 (Mech.) 25-400psi.
Fuel Pressure 82319 (Mech.)
1-10psi.
82320 (Mech.) 2-30psi.
(Not shown).
82325 (Mech.) 10-200psi.
(Not shown).
82333 (12 V., Neg. Grd.) 0-
16psi. (Not shown).



Part No. 82120



Part No. 82121



Part No. 82319

**ELEC. FUEL
LEVEL, ELEC.
OIL TEMP**

Part No.

82111
82115

Electric Fuel Level 82111 (12
V., Neg. Grd.) Requires sender
385 or 391 series and 366 LP
Tank Kit.

(See page 8 for fuel sender
data.)

**Electric Oil Temperature
82115** (12 V., Neg. Grd.) 100-
280°F. Requires sender 280 ED.



Part No. 82111



Part No. 82115

**AMMETER,
VOLTMETER,
VACUUM**

Part No.

82108 82112
82109 82117
82110

Ammeter (12 V., Neg. Grd.)
82108 60-0-60.

82109 60-0-60. Requires Shunt
813489. (Not shown).

82110 100-0-100. Requires
Shunt 407616. (Not shown).

Voltmeter 82112 (12 V., Neg.
Grd.) 10-16 V.

Vacuum 82117 2-30" Hg.



Part No. 82108



Part No. 82112



Part No. 82117

**CLOCK,
HOUR METER**

Part No.

82339
15017

Clock 82339 (12 V., Neg. Grd.)
For interior use only.

Hour Meter 15017 4-40 V. DC.
1/10 hour up to 10,000 hours.



Part No. 82339



Part No. 15017

POWER TRIM

Part No.

82124

Power Trim Indicator 82124

Indicates angle of stern drive on
all current OMC and Mercruiser
sending units.



Part No. 82124

PYROMETER

Part No.

82335
82505

Pyrometer 82335 300-1500°F.
For 24 V. system, order resistor
8259525-9. Requires Thermo-
couple 82505.

Thermocouple 82505 1/4" N.P.
T.F. connection with 2 1/2" probe
tip projection. Non-adjustable.
Probe wire measures 17" on
length.

For longer lengths:
82556-1 5' extension
wire.
82556-2 10' extension
wire.
82556-3 20' extension
wire.



Part No. 82335



Part No. 82505

NOTE: All electrical gauges that are 12 V., Neg. Grd. can be adapted to 24 V. DC using resistor 829525-2 and to 32 V. DC with resistor 829525-8, unless otherwise noted.

HEAVY DUTY INSTRUMENTS

Boat builders and panel makers alike choose Heavy Duty when rugged and long-lasting instruments are a top priority. Stewart-Warner tests instruments eighty-one ways to assure superb performance under every environmental condition, sudden changes in ambient temperature, and heavy vibration. The glare-free black bezel is standard. The face dial is backlighted and smartly-enhanced with white graduations and pointer. Heavy Duty is a great marine replacement choice.

FACE DIAL is black with white graduations.

BEZEL is black painted steel or stainless steel with decorative stainless steel front rim.

CASE is brass, 2 1/16" in diameter for gauges, 3 3/8" for tachs and speeds.

LIGHTING is internal and self-contained on all 82000 series instruments.

ELECTRICAL INSTRUMENTS feature vibration-resistant Bi-Torque® mechanisms. Electric pressure, temperature, and fuel level gauges require senders—order separately.

MECHANICAL INSTRUMENTS have vibration-resistant Bourdon tube center gear mechanisms. Mechanical pressure and vacuum gauges require tubing kits—order separately.

MOUNTING: Instruments come with mounting brackets and instructions.

TACHOMETERS

Part No.
82164
82165
551-AHK
551-AHL

Tachs Full 270° mechanism. Distributor type adjusted for 4, 6, and 8 cylinder engines, and outboards with 12 pole alternator.
82164 (0-6000rpm)

*82165 (0-8000rpm) (Not shown).
*Alternator only

Mechanical Tachs These tachs have 250° dials—5/8"-18 connection with .105" square hole. Used in conjunction with .5:1 drive shaft ratio.

551-AHK (0-3500rpm)

551-AHL (0-3500rpm) (Includes odometer).



Part No. 82164



Part No. 551-AHL



Part No. 551-AHK

TACHOMETERS

Part No.
82619
82621

Diesel Tachs These tachs have 270° dials. Factory set at 1/2:1. Fully adjustable for 1:1, 1 1/2:1, and 2:1 take-off ratios. (Rotation of engine take-off has no effect.) 12 V., Neg. Grd. All units require sender 82623 or 106-AW (Pos. and Neg. Grd.)

82619 (Reg. Diesel Tach)

82621 (Has Hour Meter)



Part No. 82619



Part No. 82621

SENDER KITS

Part No.
82623
106-AW

82623 Neg. Grd. only. 12 V. Includes .187" diameter drive tip. One sender will operate two tachs. Use for 82619 and 82621.

Drive Tips

82624 .203" dia. tang

82625 .187" dia. tang

82626 .152" dia. tang

82629 .104" square

82630 .150" square

82631 .1835" square

82632 .193" square

106-AW Pos. and Neg. Grd. Any voltage. Connects to the Mech. take-off to convert mechanical movement into electrical signals.

Drive Tips

821870 .104"

821874 .152"

821875 .187"

821876 .203"



Part No. 82623



Part No. 106-AW

NOTE: All electrical gauges that are 12 V., Neg. Grd. can be adapted to 24 V. DC using resistor 829525-2 and to 32 V. DC with resistor 829525-8, unless otherwise noted.

WATER TEMPERATURE

Part No.
284-AF
284-B

284-AF (12 V., Neg. Grd.) 100-230°F. Requires sender **280-EC** or **334-K** 1/4", **334-L** 3/8", **334-M** 1/2". For dual gauges, use **280-OB** outboard sender.
284-B (Mech.) 100-265°F. Available in lengths of 36", 72", 144".



Part No. 284-AF



Part No. 284-B

PRESSURE

Part No.
284-AE
284-D
284-P
284-AM

Oil Pressure 284-AE (12 V., Neg. Grd.) 0-80psi. Requires sender **82511**. For dual gauges, use **353-AM**.
Oil Pressure 284-D (Mech.) 5-100psi.
284-P (Mech.) 10-200psi.
Fuel Pressure 284-AM (12 V., Neg. Grd.) 0-16psi. Requires sender **82504**.



Part No. 284-D



Part No. 284-AE



Part No. 284-AM



Part No. 284-P

PRESSURE

Part No.
284-E
284-R
284-S
82336-96

Fuel Pressure 284-E (Mech.) 1-15psi.
Transmission Pressure 284-R (Mech.) 20-300psi.
284-S (Mech.) 30-400psi. Requires Kit **82553** or **366 HM**.
Combination Pressure and Temperature 82336-96 (Mech.) 110-260°F. 0-150psi.



Part No. 284-E



Part No. 284-R



Part No. 284-S



Part No. 82336-96

HOUR METER, VACUUM

Part No.
15066
284-AH

Hour Meter 15066 Records to 9999.9 hours 4-40 V. DC.
Vacuum 284-AH (Mech.) 0-30" Hg.



Part No. 15066



Part No. 284-AH

FUEL LEVEL, TURBO GAUGE

Part No.
284-M
284-BF

Fuel Level 284-M (12 V., Neg. Grd.) Requires **385** or **391** series sender and **366 LP** Tank Kit. (See page 8 for fuel sender data.)
Turbo Gauge 284-BF 2-30" Hg. 5-15psi. For gasoline engines.



Part No. 284-M



Part No. 284-BF

NOTE: All electrical gauges that are 12 V., Neg. Grd. can be adapted to 24 V. DC using resistor **829525-2** and to 32 V. DC with resistor **829525-8**, unless otherwise noted.

**AMMETER,
VOLTMETER**

Part No.
284-A 284-H
284-AA 284-AJ
284-AB

Ammeter 284-A 60-0-60
284-AA 100-0-100. Requires Shunt **407616**. (Not shown).
284-AB 60-0-60. Requires Shunt **813489**. (Not shown).
Voltmeter 284-H (12 V., Neg. Grd., Pos. Grd.) 10-16 V.
284-AJ (24 V., Neg. Grd.) 20-32 V. (Not shown).



Part No. 284-A



Part No. 284-H

CLOCK

Part No.
82338

Clock 82338 (12 V., Neg. Grd.)
For interior use only.



Part No. 82338

POWER TRIM

Part No.
284-BP

Power Trim Indicator 284-BP
Indicates angle of stern drive on all current OMC and Mer-cruiser sending units.



Part No. 284-BP

PYROMETER

Part No.
82334
829525-9

Pyrometer 82334 (12 V., Neg. Grd.) 300-1500°F. Requires **82505** Thermocouple. For 24 V. DC, use **829525-9**.
Thermocouple 82505 1/4" N.P.T.F. connection with 2 1/2" probe tip projection. Non-adjustable. Probe wire measures 17" in length. For longer lengths.

82556-1 5' extension wire.
82556-2 10' extension wire.
82556-3 20' extension wire.



Part No. 82334



Part No. 829525-9

Seaworthy INSTRUMENTS

For contemporary value, Seaworthy instruments have become the leading choice of quality-conscious boat makers. Stewart-Warner performance and reliability are built-in, and the colorful, high-visibility graphics are eye-catching. International function symbols are shown, and the face dial has orange, white, and gold colors. These internally-illuminated instruments are a good choice for new and replacement installations where focus is on the modern day boat owner.

FACE DIAL is black with orange and gold graduations and white numerals and white pointer.

BEZEL is painted black stainless steel with decorative stainless steel front rim.

CASE is raised plastic, with 2 1/8" diameter for gauges, 3 3/8" for tachs and speeds.

LIGHTING is internal and self-contained on all 82000 series instruments.

ELECTRIC INSTRUMENTS feature vibration-resistant Bi-Torque® mechanisms. Electric pressure, temperature, and fuel level gauges require senders—order separately.

MECHANICAL INSTRUMENTS have vibration-resistant Bourdon tube center gear mechanisms. Mechanical speedometer requires tubing kit—order separately.

MOUNTING: Instruments come with mounting brackets and instructions.

NOTE: All electrical gauges that are 12 V., Neg. Grd. can be adapted to 24 V. DC using resistor **829525-2** and to 32 V. DC with resistor **829525-8**, unless otherwise noted.

TACHOMETERS

Part No.
82166
82167

Tachometers Feature a full 270° mechanism for more accurate readings. Distributor type adjusted for 4, 6, and 8 cylinder engines, as well as 12 pole alternator by means of a screwlock switch.

*82166 (0-6000rpm)

*82167 (0-8000rpm)

*Alternator only



Part No. 82166



Part No. 82167

SPEEDOMETERS

Part No.
82168
82169

Speedometers They match all Seaworthy tachs. Feature 270° movement for accurate readings. Speed is shown in both mph and km/h.

82168 (10-60mph) (15-100km/h)

82169 (20-75mph) (15-120km/h)

(See page 9 for kit information.)



Part No. 82168



Part No. 82169

**FUEL LEVEL,
OIL PRESSURE,
WATER
TEMPERATURE**

Part No.
82125 82127
82126

Fuel Level 82125 Calibrated at quarter-tank levels.

(See page 8 for fuel sender data.)

Oil Pressure 0-80psi. 0-6kp/cm²

Water Temperature 100-240°F. 40-120°C.



Part No. 82125



Part No. 82126



Part No. 82127

VOLTMETER

Part No.
82128

Voltmeter 82128 10-16 V.
Neg. Grd. only.



Part No. 82128

POWER TRIM

Part No.
82129

Power Trim Indicator 82129
Indicates angle of stern drive on all current OMC and Mer-
cruiser sending units.



Part No. 82129

**APPROVED
MARINE
ALTERNATOR
SYSTEMS**

STEWART-WARNER ACCESSORIES

S-W Tachometers model numbers 82163, 82165, 82167 are approved for use with the following alternator systems.

Suzuki 8 pole	Large Yamaha 12 pole	On Sea Drive 12 pole
Mercury 12 pole	Large Suzuki 12 pole	Chrysler 20 pole
OMC 12 pole	New O.M.C. Regulator	Mercury 4 pole
Chrysler 12 pole	12 pole	Suzuki 4 pole

NOTE: All electrical gauges that are 12 V., Neg. Grd. can be adapted to 24 V. DC using resistor 829525-2 and to 32 V. DC with resistor 829525-8, unless otherwise noted.



**APPROVED
MARINE
IGNITION AND
ALTERNATOR
SYSTEMS**

**Approved Marine Ignition and
Alternator Systems**

S-W Seaworthy Tachometers model numbers 82162, 82164, 82166 are approved for use with the following alternator systems.

- A. Mercruiser**—Resistive spark plugs and ignition wires
4 cyl (Delco-Remy coil & single point distributor)
6 cyl (Delco-Remy coil & single point distributor)
8 cyl (Thunderbolt IV Hall-Effect Electronic)
- B. OMC Sterndrive**—Non-resistive spark plugs and resistive ignition wires
4 cyl (Delco-Remy coil & single point distributor)
6 cyl (Delco-Remy coil & single point distributor)
8 cyl (Delco-Remy coil & single point distributor)
- C. Outboard Flywheel Alternators**—12 pole
Manufacturer: Chrysler, Mariner and Mercury, OMC (Johnson and Evinrude), OMC Sea Drive, Suzuki

**SURFACE
MOUNT TACH
& SPEEDS**

- Part No.**
82154
82155
82156

Tachometer

For use with any 2 or 4 cycle engine from 1 to 8 cylinders. May be used with standard, transistor, ignition systems, or 12 pole alternator ignition system. Neg. Grd. No external sender needed.

Part No. 82154 (0-6000rpm)

Speedometers

Surface mount units 3 3/8" at front end and 4" at base. They extend 2 1/2" from panel. Kit consists of: Basic speedometer head, 18' of tubing, double wire lamp socket with 12 V. bulb, deluxe pitot tube with attaching screws, and all mounting hardware.

Part No. 82155 10-60mph, 9-52 knots.

Part No. 82156 10-45mph, 9-39 knots. (Not shown).

Description	Part No.
Deluxe Pitot Tube	433084
Thru Transom Fitting	811159
Connecting Tubing (18')	171894



Part No. 82154



Part No. 82155

**SENDERS FOR
FUEL LEVEL
GAUGES**

- Part No.**
385-B
385-C
391-A
391-B
391-C
391-D

**Choosing Fuel
Level Senders**

Adjustable tank units are available in many models depending on the depth and shape of the fuel tank, the location of the tank unit within the fuel tank, the voltage of the electrical system, and whether they are designed for magnetic or thermo type gauges.

You will notice that the holes in the tank unit bracket plate are not evenly spaced. The distance between two of the holes is greater than between any other two. When viewing the bracket plate, with the widely separated holes nearest you, the float arm will swing left if it is a left hand tank unit, or right if it is a right hand tank unit.

If there is more room in the tank to the left of the tank unit mounting location, use a tank unit that swings to the left and vice versa.

The space available must exceed the length of the float arm and float.



For 10"-24" Depth

Part No. 385-B

Description	12-Volt
6"-12" depth; LH arm	385-B
6"-12" depth; RH arm	385-C
10"-15" depth; LH arm	391-A
10"-15" depth; RH arm	391-B
15 1/2"-24" depth; LH arm	391-C
15 1/2"-24" depth; RN arm	391-D

For 10"-24" Depth

Replacement Floats:

411290 Brass (for 391 Series)

427410 Plastic (for 385 Series)

NOTE: Order Fuel Level Sender (Tank Unit) Installation Kit No. 366-LP.

NOTE: All electrical gauges that are 12 V., Neg. Grd. can be adapted to 24 V. DC using resistor 829525-2 and to 32 V. DC with resistor 829525-3.



MARINE ACCESSORIES, FUEL PUMPS

Part No.
82055
82056
82057

Solid State Marine Fuel Pumps (U.L. Listed) Corrosion-resistant to prevent leakage. No possibility of accidental grounding. Approved by Underwriters Laboratories, U.S. Coast Guard regulations effective 8/1/78. (Hobbs switch **4012** required.)
Part No. 82055 (12 V., Pos. or Neg. Grd.) 7psi.
Part No. 82056 (24 V., Pos. or Neg. Grd.) 7psi.
Part No. 82057 (12 V., Pos. or Neg. Grd.) 4psi.



Part No. 82055

SPEEDOMETER KITS

Part No.
82152
82153
82168
82169

Consist of basic speed head, 18' of tubing, double wire lamp socket with 12V bulb, deluxe pitot tube with attaching screws, all mounting hardware.

Ordering information

Dial Range	Kit No.	Dial Range	Kit No.
10-45 mph (Deluxe)	82152	10-60 mph (Seaworthy)	82168
10-60 mph (Deluxe)	82153	20-75 mph (Seaworthy)	82169

Accessories

Description	Part No.
Deluxe Pitot Tube	433084
Thru Transom Fitting	811159
Connecting Tubing (18')	171894

MARINE PANEL

Part No.
271-W

271-W

This panel is die-cast aluminum covered with a tough, moisture and corrosion resistant, clear epoxy coating. Panel is 12 1/2" x 6 1/4" and has a non-reflective black finish. Will hold up to 4 Stewart-Warner gauges and a tachometer. All instruments are front mounted. It will also accept Hobbs hour meter **15000**, ignition switch **370-T**, and light switch **370-C** or **366-5B**. All panel mounting hardware is included.



Part No. 271-W

HOBBS PRESSURE AND VACUUM SWITCHES

Hobbs Pressure and Vacuum Switches

Specifications and Part Numbers

Standard Pressure Setting	Single Circuit 1 Terminal		Single Circuit 2 Terminals		Dual Circuit 3 Terminals NO & NC
	Normally Open ①	Normally Closed ②	Normally Open ①	Normally Closed ②	

Low Pressure Switches

4 PSI	4000	4001	4006	4007	4012
15 PSI	4002	4003	4008	4009	4013
60 PSI	4004	4005	4010	4011	4014
100 PSI	14731	14729	14732	14728	14727

Vacuum Switches

4" HG	4070	4071	4076	4077	
-------	------	------	------	------	--

① Normally open means that the contacts in the switch are open (not in contact) until pressure or vacuum is applied.

② Normally closed means that the contacts in the switch are closed (in contact) until pressure or vacuum is applied.



Part No. 4000



Part No. 4006

SWITCHES

Part No.
370-T
370-C
366-SB

Ignition Switch 370-T Mounts in 3/4" hole in Stewart-Warner panels or existing instrument panels.

2 Position Switch 370-C For all lighted instruments.

Light Dimmer Switch 366-SB Rheostat control for all lighted instruments.



Part No. 370-T



Part No. 370-C



Part No. 366-SB

NOTE: All electrical gauges that are 12 V., Neg. Grd. can be adapted to 24 V. DC using resistor **829525-2** and to 32 V. DC with resistor **829525-8**, unless otherwise noted.

**HOBBS
HALOGEN
MARINE LAMPS**

- Part No.**
72656-23
72715-23
71723-23
72716-23
72666-23
72717-23
72530-23
72718-23
73620-01

- REPLACEMENT
BEAMS**
72108-15
72719-15
72728-15
72720-15
74041-01
ACCESSORIES
72777
72733

Halogen Marine Lamps

All stainless steel hardware available. Available in 12 V.—50 Watt and 24 V.—70 Watt. For stud mounting or flush mountings. Weather-proof shock mounting. Spot and flood beam patterns up to 200,000 Candle Power.

Part No. (4"x6")	Bracket Style	Beam Pattern	Voltage
72656-23	Flush	80° x 30° Flood	12 V. 50 W.
72715-23	Flush	Spot	12 V. 50 W.
71723-23	Stud	80° x 30° Flood	12 V. 50 W.
72716-23	Stud	Spot	12 V. 50 W.
72666-23	Flush	80° x 30° Flood	24 V. 70 W.
72717-23	Flush	Spot	24 V. 70 W.
72530-23	Stud	80° x 30° Flood	24 V. 70 W.
72718-23	Stud	Spot	24 V. 70 W.
73620-01	Stud	80° x 30° Flood	12 V. 50 W.

Replacement Beams

Part No.	Beam Pattern	Voltage
72108-15 (4"x6")	80° x 30° Flood	12 V. 50 W.
72719-15 (4"x6")	Spot	12 V. 50 W.
72728-15 (4"x6")	80° x 30° Flood	24 V. 70 W.
72720-15 (4"x6")	Spot	24 V. 70 W.
74041-01 (3"x5")	80° x 30° Flood	12 V. 50 W.

Accessories

Part No.	Description
72777	Wiring & Instruction Kit
72733	Lens Cover (4"x6" Lamp only)



Part No. 73620-01



Part No. 72716

**ENGINE
WARNING
SYSTEMS**

- Part No.**
D-825104
366-TJ

Engine Warning Systems

This audio/visual system provides warning of extreme engine operating conditions. A light and a buzzer in the unit are triggered by sender switches to warn of low oil pressure, high water temperature, etc. The system can be mounted in panels up to 1/2" thick and operates on 12 V. power. It can be used with or without other instrumentation.

Part No. D-825104 Consists of a warning device, a nameplate, and 4 speed grip connectors. The sender switches must be ordered separately (see charts).

Part No. 366-TJ Consists of D-825104, plus pressure sender switch 364-L and temperature sender switch 363-F.

Temperature Sender Switches For Warning System

Temperature Setting	1/4" Thread	3/8" Thread	1/2" Thread
200°F	363-D	363-E	363-F
225°F	363-AM	—	363-G
250°F	—	—	363-W

Pressure Sender Switches For Warning System

Thread Size	Pressure Setting	
	6 Psi	15 Psi
1/8"	364-L	364-K
1/4"	364-M	—
1/2"	—	—

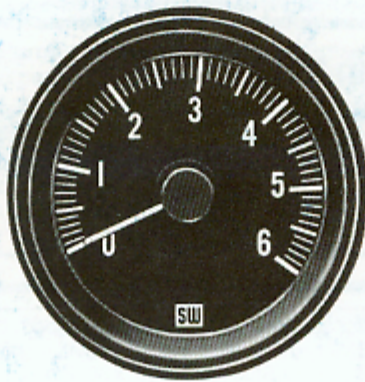


Part No. 366-TJ

NOTE: All electrical gauges that are 12 V., Neg. Grd. can be adapted to 24 V. DC using resistor 829525-2 and to 32 V. DC with resistor 829525-8, unless otherwise noted.



DELUXE



HEAVY DUTY



SEAWORTHY

With three quality marine instrument lines,
and world-wide factory support
Stewart-Warner does more to help you sell.

DISTRIBUTION AND SERVICE CENTERS

Atlanta, Georgia
5246 Snappington Woods Drive
Decatur, Ga. 30032
(404) 981-2770

Baltimore/Washington, D.C.
Phone (301) 252-9300
Sales • Service • Warehouse
23 W. Aylesbury Rd.
Balt. (Timonium), Md. 21093-0187

Billings, Montana 59102
811 2nd Ave. N.
(406) 259-4786

Birmingham, Alabama 35210
4727 Alton Court
(205) 956-0105

Boston, Massachusetts
110 Shawmut Rd.
Canton, MA 02021
(617) 828-6030

Buffalo, New York
2500 Walden Ave.
Cheektowaga, N.Y. 14225
(716) 685-3850

Charlotte, North Carolina 28208-3607
2900 Interstate St.
(704) 394-0126

Chicago, Illinois
9250 Ivanhoe St.
Schiller Park, Illinois 60176
(312) 671-1380 (Schiller Pk.)
(312) 589-1550 (Chicago)

Cincinnati, Ohio 45223
4046 Hamilton Ave.
(513) 681-2323

Cleveland, Ohio
25971 Cannon Rd.
Bedford Heights, Ohio 44146
(216) 439-7955

Cleveland Ignition Co.
10646 Leuer Ave.
Cleveland, Ohio 44108
(216) 851-8000
(Instruments only)

Dallas, Texas 75229
2525-320 Royal Lane
(214) 241-7777

Denver, Colorado 80223
1001 W. Arizona Ave.
(303) 744-3471

Des Moines, Iowa 50313
5694 N.E. 17th St.
(515) 266-3164

Detroit, Michigan
1009 W. Maple Rd.
Clawson, Mich. 48017
(313) 435-2200

El Paso, Texas 79925
1220 Airway Blvd.
(915) 778-3366

Houston, Texas 77036
7540 Harwin Dr.
(713) 780-3370

Indianapolis, Indiana 46219
2951 N. Webster Ave.
(317) 547-5265

Jacksonville, Florida 32205
1057 Ellis Rd. North
Bay #7
P.O. Box 60549 (32236)
(904) 783-0600

Kansas City, Missouri 64120
6004 Connecticut Ave.
(816) 483-9866

Los Angeles, California 90015
333 W. Washington Blvd.
(213) 748-0261

Louisville, Kentucky 40208
1475 S. Floyd St.
(502) 637-4707

Memphis, Tennessee 38105
2315 So. Elvis Presley Blvd.
(901) 942-3257

Milwaukee, Wisconsin
2720 So. 163rd St.
New Berlin, Wisc. 53151
(414) 786-1645

P.E. Weber Inc.
738 N. 8th St. 53233
(414) 276-8140
(Instruments only)

Minneapolis, Minnesota 55413
740 Northeast Harding St.
(612) 331-8464

Nashville, Tennessee 37210
1650 Elm Hill Pike Suite #6
(615) 871-0230

New Orleans, Louisiana
5620 Salmen St.
Harahan, La. 70123
(504) 733-6133

New York/New Jersey
N.Y. (212) 349-4050
N.J. (201) 687-1100
Sales • Service • Warehouse
1480 Ridgeway St.
Union, New Jersey 07083

Omaha, Nebraska 68137
10901 "I" Street
(402) 339-7900

Philadelphia, Pennsylvania 19123
930 N. Eighth St.
(215) 922-5430

Phoenix, Arizona 85005
2112 N. 23rd Ave.
(602) 258-5721

Pittsburgh, Pennsylvania
1650 Main St.
Sharpsburg, Pa. 15215
(412) 782-4495

Speedometer Service Co.
4740 Baum Blvd. 15213
(412) 621-2900
(Instruments only)

Portland, Oregon 97210
3323 N.W. Yeon Ave.
(503) 227-3501

St. Louis, Missouri 63114
1805 Belt Way Drive
(314) 428-9607

Salt Lake City, Utah
4425 S. 500 West, Suite C
Murray, UT 84123
(801) 261-5111

San Antonio, Texas 78207
1523 N. Laredo
(512) 736-4666

S. X. Callahan Co.
824 S. Laredo 78207
(512) 224-1625
(Instruments only)

So. San Francisco, Cal. 94080
183 Beacon St.
(415) 583-4600

Seattle, Tukwila, Wash. 98168
12604 1/2 Interurban Ave. South
(206) 433-0804

Toledo, Ohio
Toledo Auto Electric Inc.
1717 Monroe St. 43624
P.O. Box 737 43601
(419) 243-7104
(Instruments only)

Tulsa, Oklahoma 74145
7656 E. 48th St.
(918) 663-3700

INTERNATIONAL OFFICES AND FACILITIES

Australia, Brookvale, N.S.W. (2100)
Alemite Lubquip Pty. Ltd.
2 William Street

Canada, Belleville, Ontario K8N 5B8
Stewart-Warner Corp. of Canada, Limited
349 MacDonald Avenue

England, Tyne & Wear—NE29-7UE
Stewart-Warner Ltd.
West Chirton Trading Estate
North Shields

Germany, Hilden (401)
Stewart-Warner, Alemite GmbH
Stockhausstrasse 9

Mexico, Monterrey, N.L.
Industrial Alemex, S.A.
Tapia 836 Oriente



STEWART-WARNER CORPORATION
ALEMITE AND INSTRUMENT DIVISION
1826 DIVERSEY PARKWAY • CHICAGO, ILLINOIS 60614
PHONE: 312-883-7612

GILMORE DISTRIBUTING CO., INC.
1011 AUSTIN ST.
SOUTH HOUSTON, TX. 77587
713-946-9133 & 946-9134