

Catalog 387
Effective Mar. 1986
High-Performance
Products

STEWART-WARNER *HIGH PERFORMANCE INSTRUMENTS*

FOR THE ROAD

FOR THE TRACK



STEWART-WARNER
Our Track Record Speaks
for Itself

SYMBOL OF

SW
EXCELLENCE

STEWART-WARNER

"Nobody wants you to

A NEW GENERATION OF HIGH-PERFORMANCE INSTRUMENTS BACKED BY A HIGH-PERFORMANCE RACING PROGRAM

Designed and developed exclusively for the speed community, the new generation of Stewart-Warner high-performance instruments offer the finest in accuracy, reliability, and readability. It represents the latest technology available to the science of instrumentation mechanisms.

Twelve new professional models and 19 new sport models make up this new high-performance group of instruments. Each is precisely-calibrated and carefully-engineered, designed to give the driver absolute confidence in his equipment. These are the instruments the racing world will be looking at. They will be the choice of respected professionals, and forward-looking drivers, across the motoring fraternity. They will be the instruments high-performance customers will buy and install.

Engineered Features Enhance Driving Performance

Special new features make these new Stewart-Warner high-performance instruments a standout. The look and the lighting received special attention when these easy-to-read instruments were developed. Exclusive Transoptic® III lighting and bold high-visibility graphics were designed to help the driver—and his powerful vehicle—operate at peak capacity.

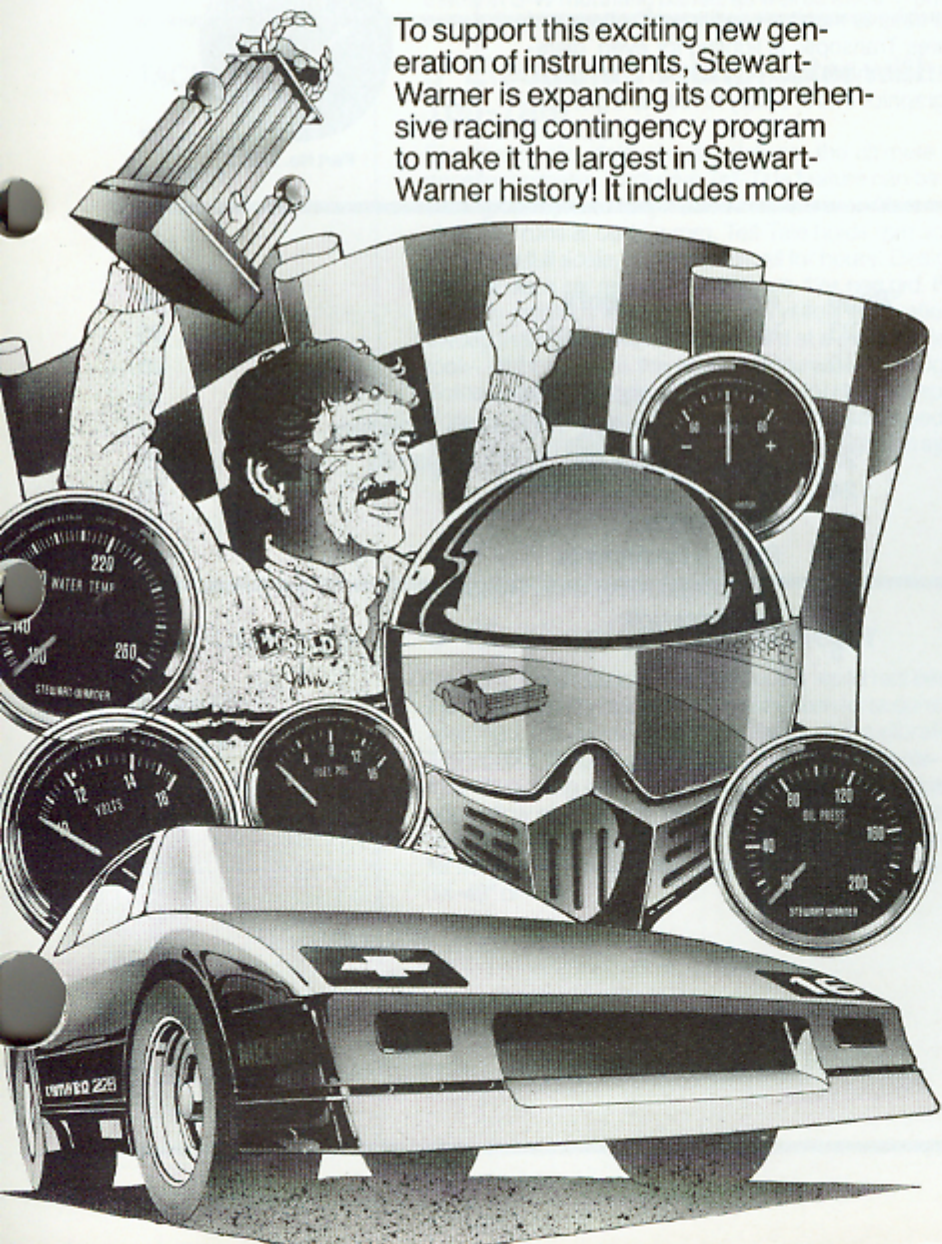


Reliability

America's drivers rely on Stewart-Warner, whether they're driving race cars, heavy duty trucks, or the family car. They know they can be confident of getting the same high quality in every instrument they buy. Stewart-Warner makes many different kinds of instruments, but there is never any difference in the quality.

win more than we do."

Introducing the most comprehensive racing program in Stewart-Warner history— **THE STEWART-WARNER CONTINGENCY RACING PROGRAM NASCAR-INDY 500-NHRA**



To support this exciting new generation of instruments, Stewart-Warner is expanding its comprehensive racing contingency program to make it the largest in Stewart-Warner history! It includes more

than 70 NASCAR, IROC, and NHRA events, plus the Indy 500. This support of racing's most exciting and prestigious events is sure to win consumer support across the country.

Stewart-Warner is considered the official supplier to IROC.

Winners and runners-up at NHRA and NASCAR events and the Indy 500 qualify when they use Stewart-Warner high-performance instruments and display the Stewart-Warner decal. NHRA events include the Winter-Nationals, SportNationals, Summer-Nationals, U.S. Nationals, and the Winston World Finals. NASCAR events include the Daytona 500, Miller High Life 400, Budweiser 500, Champion Spark Plug 400, and the Winston Western 500—30 blockbuster races. Plus the Indy 500.

Contingency Program At A Glance

NHRA NATIONAL—14 events, tachs, oil pressure, water temperature

NHRA POINTS MEETS—33 events, tachs, oil pressure, water temperature


NASCAR—30 events, instrumentation

INDY 500—contingency and special awards

How to Use the High Performance Catalog

Each product is presented in three segments across the page.

- ① The left-hand column shows product category and part numbers described. More than one part number may be presented.
- ② The center column gives specific product name and a brief description. The description can include size, capacity, applications, construction details, outlet dimensions, and so on. In some cases, both product description and product illustration are grouped across the center and right-hand columns.
- ③ The right-hand column contains an illustration of the product.

①	②	③
<p>VOLTS</p> <p>Part No. 82812</p>	<p>2⁵/₈" Voltmeter</p> <p>10-16v, neg grd. Can be used to monitor condition of battery and charging system. Features Transoptic III lighting for even, glare-free, blue-white light. Flat black matte look—right down to the bezel. Bold new high-visibility graphics that are easy to read at a glance.</p>	 <p style="text-align: center;">Part No. 82812</p>

Product Category	Page	Product Category	Page
Angle Adapter	23	Housings & Mountings	26
Assembled Gauge Panels	18	Panels	26
Deluxe Instruments	11	Panels/Special Gauges	19
Deluxe Racing—2 ⁵ / ₈ " Instruments	11	Pressure Senders, Tubing Kits, Adapters	21
Flexible Shaft for Tachometers	23	Resistors, Switches, Warning Signals	22
Fuel Pumps	24	Senders	20
Fuel Pump Safety Switch	24	Signal Lights	23
Fuel Senders	20	Stage 3 Instruments	14
Gauge Sender Application Chart	25	Temperature Senders, Adapter	21
Heavy Duty Instruments	16	Thermocouple	20
High Performance Instruments	5		

HIGH PERFORMANCE INSTRUMENTS

High Performance

Face Dial Bold high-visibility graphics. Black with yellow and white graduations. Bright red sweep hand indicator.
Bezel Raised, flat black finish, steel.
Case Gauges are 2 $\frac{5}{8}$ " or 2 $\frac{1}{4}$ " in diameter, steel. Speeds and tachs are 5" or 3 $\frac{3}{8}$ ", steel.
Lighting Transoptic® III lighting combines front and back lighting features for improved night-time readability. Lighting kits are included with all gauge models.
Electric Gauges Bi-Torque® mechanisms. Can be mounted on any angle. Not affected by car voltage or by changes in ambient temperature. **Senders are required for electric temperature, pressure, and fuel-level gauges.** Pointer rests at random.
Mechanical Gauges Bourdon tube Accustat® mechanisms. Withstands heavy vibration. Silicone damped pointer assures steady readings. **Mechanical pressure, vacuum gauges require tubing kits.** Pointer rests below first graduation.
Mounting Gauges come with mounting brackets and instructions. Install in S-W mounting panels as well as existing panels.

TACHOMETERS

Part No. 82800

5" Electronic Tachometer with Tell-Tale

Electronic solid state circuitry delivers the ultimate in a performance tachometer. Exclusive Tell-Tale feature can be used to recall the highest rpm on any run down the track. Also used to ensure stock car runs at certain rpm. Tell-Tale holds rpm accuracy within 2% of the full scale, maintains recall for hours. Designed for road, drag, or stock car racing. 0-10,000rpm. 12v, neg grd. Bold new high-visibility graphics feature white and yellow graduations. Bright red sweep indicator hand is easy to read at a glance. Flat black matte look—right down to the bezel. Features even, bright, glare-free Transoptic® III lighting. Blue-white color. No hot spots. Uses Bi-Torque® mechanisms, the most accurate and rugged type of meter movement available. Operates on all OEM ignition systems as well as most aftermarket electronic systems.



Part No. 82800

TACHOMETERS

Part No. 82801

5" Mechanical Tachometer

Big new professional model the racing world has been waiting for. Features built-to-last internal construction for accurate, steady rpm readings. Designed for 0-10,000rpm. 2:1 calibration. Features Transoptic® III lighting, which is even—no hot spots—bright, glare-free. Blue-white color. Bold new high-visibility graphics include white and yellow graduations, bright red sweep indicator hand that is easy to read at a glance. Flat black matte look, right down to the bezel. $\frac{5}{8}$ "-18 connection with .105" square hole. Uses flexible shaft 446900-1X-42" or -72".



Part No. 82801

AMMETERS

Part No.
82805

2 5/8" Ammeter

Big gauge with new bold high-visibility graphics and bright red sweep indicator hand that is easy to read at a glance. 60-0-60. Features Transoptic® III lighting for even, bright, glare-free, blue-white color. No hot spots. Includes mounting kit and instructions.



Part No. 82805

FUEL PRESSURE

Part No.
82806

2 5/8" Fuel Pressure Gauge

Mechanical gauge designed for 0-15psi. Features bold new graphics with yellow and white graduations and high-visibility bright red sweep indicator hand that is easy to read at a glance. Flat black matte look right down to the bezel. Uses standard 1/8" pipe thread connections. See tubing kits page 22. Transoptic® III lighting gives bright, even, glare-free light. No bright spots.



Part No. 82806

OIL PRESSURE

Part No.
82807
82808

2 5/8" Oil Pressure Gauge

Mechanical gauges feature bold graphics. Transoptic® III lighting. Black matte finish. Uses standard 1/8" pipe thread connections. See tubing kits page 22.
Part No. 82807 5-100psi.
Part No. 82808 10-200psi.



Part No. 82807

WATER TEMPERATURE

Part No.
82809

2 5/8" Water Temperature Gauge

Mechanical gauge. 100-265°F. Supplied with 1/2" pipe thread adapter (other adapters available). See page 21. Features Transoptic® III bright, glare-free lighting and bold graphics. Yellow, white graduations with red easy-to-read sweep indicator hand. Flat black matte finish. Capillary tube lengths available 72"-144".



Part No. 82809

OIL TEMPERATURE

Part No.
82810

2 5/8" Oil Temperature Gauge

Mechanical gauge. 140-325°F. Bold new high-visibility graphics make gauges easy to read at a glance. Flat black matte finish includes bezel. Bright, glare-free Transoptic® III lighting provides even illumination. No hot spots. Supplied with 1/2" pipe thread adapter (other adapters available). See page 21. Capillary tube lengths available 72"-144".



Part No. 82810

VACUUM

Part No.
82811

2 5/8" Vacuum Gauge

Mechanical gauge monitors engine vacuum for most efficient operation. 0.30 in.-Hg. Uses standard 1/8" pipe thread connections. See tubing kits page 22. Bold high-visibility graphics with bright red sweep indicator hand. Transoptic® III lighting for even, glare-free, blue-white color. No hot spots. Flat black matte look down to the bezel.



Part No. 82811

VOLTS

Part No.
82812

2⁵/₈" Voltmeter

10-16v, neg grd. Can be used to monitor condition of battery and charging system. Features Transoptic® III lighting for even, glare-free, blue-white light. Flat black matte look—right down to the bezel. Bold new high-visibility graphics that are easy to read at a glance.



Part No. 82812

FUEL

Part No.
82813

2⁵/₈" Fuel Level Gauge

12v, neg grd. Features bold new high-visibility graphics that are easy to read at a glance. Transoptic® III lighting is even (no hot spots), bright, glare-free, blue-white color. Flat black look includes the bezel. Use senders on page 20.



Part No. 82813

**PRESSURE/
 VACUUM**

Part No.
82814

2⁵/₈" Pressure/Vacuum Gauge

Mechanical gauge designed for 0-30 in.-Hg./0-40psi. Measures turbo-charger boost pressures. Features Transoptic® III lighting for glare-free, even, blue-white light. Flat black matte look. Bold graphics are easy to read at a glance. Yellow, white graduations and bright red sweep indicator hand. Uses standard 1/8" pipe thread connections. See tubing kits page 22.



Part No. 82814

TACHOMETER

Part No.
82850

**3³/₈" Electronic Tachometer with
 Adjustable Shift Pointer**

Can be used to indicate proper shifting points for peak engine performance. Designed for 0-10,000rpm. Features bold new high-visibility graphics that are easy to read at a glance. White and yellow graduations and bright red sweep indicator hand. Transoptic® III lighting offers even, glare-free, bright, blue-white light. Features Bi-Torque® mechanism, most accurate and rugged type of meter movement available. Choice of forward-looking drivers and respected professionals across the motoring fraternity. 12 v. neg. grd. Operates on all OEM ignition systems as well as most after-market electronic systems.



Part No. 82850

SYMBOL OF

STEWART-WARNER CORPORATION

ALEMITE AND INSTRUMENT DIVISION
1826 DIVERSEY PARKWAY - CHICAGO, ILLINOIS 60614

COMPETITION INSTRUMENTS FOR ROAD AND TRACK

CATALOG 387
EFFECTIVE MAR. 1986

High Performance
Instruments

TACHOMETER

Part No.
82851

3³/₈" Mechanical Tachometer with Adjustable Shift Pointer

Used to indicate proper shift points for peak engine performance. 2:1 calibration. Built-to-last internal construction for accurate, steady rpm readings. Designed for 0-10,000rpm. $\frac{5}{8}$ "-18 connection with .105" square hole. Uses flexible shaft 446900-1X-42" or -72". Transoptic® III lighting, which is even—no hot spots—bright, glare-free, blue-white color. Bold new high-visibility graphics include white and yellow graduations, bright red sweep indicator hand that is easy to read at a glance. Flat black matte look down to the bezel.



Part No. 82851

SPEEDOMETER

Part No.
82852

3³/₈" Speedometer

Mechanical gauge designed for 0-160mph. Panel mount with odometer and conventional sweep. Standard $\frac{5}{8}$ "-18 connection with .105" square hole. Features Transoptic® III lighting for even, glare-free, blue-white color and bold new high-visibility graphics. Flat black matte look includes bezel.



Part No. 82852

PEDESTAL TACHOMETER

Part No.
82853

3³/₈" Pedestal Mount Electronic Tachometer

0-10,000rpm. Bi-Torque® mechanism provides accuracy and instant needle response. Shock resistant for heavy-duty applications. Transoptic® III lighting illuminates dial and pointer with even, glare-free, blue-white color. Complete instructions included. Flat black matte finish. Bold high-visibility graphics. 12v neg grd. Operates on all OEM ignition systems as well as most aftermarket ignitions.



Part No. 82853

MINI TACHOMETER

Part No.
82854

Electronic Mini-Tachometer

0-8000rpm. Small enough—3 $\frac{1}{2}$ " high—to mount on dash. Flat black finish includes bezel. Bold new graphics. Transoptic® III lighting for even, glare-free illumination. Rugged Bi-Torque® mechanism combined with solid-state circuitry. 12v, neg grd. Complete instructions included. Operates on all OEM ignition systems as well as most aftermarket electronic ignitions.



Part No. 82854

AMMETER

Part No.
82855

2¹/₁₆" Ammeter

60-0-60. Flat black matte finish. High-visibility graphics feature yellow, white graduations and bright red sweep indicator hand that is easy to read at a glance. Transoptic® III lighting offers even, glare-free illumination. No hot spots.



Part No. 82855

FUEL
 PRESSURE

**Part No.
 82856**

2 1/16" Fuel Pressure Gauge

Mechanical gauge measures 0-16psi. Uses standard 1/8" pipe thread connections. Bold high-visibility graphics are easy to read at a glance. Transoptic® III lighting provides even, glare-free illumination. No hot spots.



Part No. 82856

OIL
 PRESSURE

**Part No.
 82857
 82858
 82865**

2 1/16" Oil Pressure Gauges

Bold high-visibility graphics feature yellow, white graduations and bright red sweep indicator hand that is easy to read at a glance. Transoptic® III lighting provides even, glare-free illumination with no hot spots. Flat matte black finish even down to the bezel.

Part No. 82857 Mechanical. 5-100psi. Uses standard 1/8" pipe thread connections. See tubing kits page 22.

Part No. 82858 Mechanical. 10-200psi. Uses standard 1/8" pipe thread connections. See tubing kits page 22.

Part No. 82865 12v. 0-100psi. Use senders on page 22. Resistors available for other voltages. See page 23.



Part No. 82855



Part No. 82858

WATER
 TEMPERATURE

**Part No.
 82859
 82866**

2 1/16" Water Temperature Gauges

Part No. 82859 Mechanical. 100-265°. Supplied with 1/2" pipe thread adapter (other adapters available). See page 21.*

Part No. 82866 12v. 100-280°F. Use senders on page 20.



Part No. 82859

*Capillary tube lengths available. -36", -72", -144".

OIL
 TEMPERATURE

**Part No.
 82860**

2 1/16" Oil Temperature Gauge

Mechanical gauge. 140-325°F. Supplied with 1/2" pipe thread adapter (other adapters available). See page 21. Transoptic® III lighting provides even, glare-free, blue-white illumination with no hot spots. Flat black matte finish includes bezel. Bold new high-visibility graphics make dials easy to read at a glance.



Part No. 82860

*Capillary tube lengths available. -36", -72", -144".

VACUUM

**Part No.
 82861**

2 1/16" Vacuum Gauge

Mechanical gauge monitors engine vacuum for most efficient operation. Measures 0-30" in. Hg. High-visibility graphics include yellow, white graduations and bright red sweep indicator hand that is easy to read at a glance. Black matte finish. Transoptic® III lighting features even, glare-free illumination. Uses standard 1/8" pipe thread connections. See tubing kits page 22.



Part No. 82861

VOLTS

Part No.
82862

2 1/16" Voltmeter

10-16v. Can be used to monitor condition of battery and charging system. Bold new graphics for easy-to-read-at-a-glance visibility. Black matte finish includes bezel. Transoptic® III lighting for even, glare-free illumination with no hot spots.



Part No. 82862

FUEL

Part No.
82863

2 1/16" Fuel Level Gauge

12v, neg. grd. Features bold new high-visibility graphics that are easy to read at a glance. Bright red sweep indicator hand. Black matte finish includes bezel. Transoptic® III lighting provides even, glare-free illumination. Resistors available for other voltages. See page 23. Requires sending unit page 20.



Part No. 82863

**PRESSURE/
 VACUUM**

Part No.
82864

2 1/16" Pressure/Vacuum Gauge

Mechanical gauge designed for 0-30 in. Hg/0-15psi. Measures turbo-charger boost pressures. Transoptic® III lighting provides glare-free illumination. Matte black finish. High-visibility graphics include yellow, white graduations and bright red sweep indicator hand. Uses standard 1/8" pipe thread connections. See tubing kits page 22.



Part No. 82864

**OIL
 TEMPERATURE**

Part No.
82867

2 1/16" Oil Temperature Gauge

12v, neg. gnd. 140-320°F. Bold high-visibility graphics feature yellow, white graduations and bright red sweep indicator hand. Transoptic® III lighting provides bright, even illumination with no hot spots. Black matte finish. Requires sending unit page 20. Resistors available for other voltages page 23.



Part No. 82867

**FUEL
 PRESSURE**

Part No.
82868

2 1/16" Fuel Pressure Gauge

12v, neg. gnd. 1-16psi. Eliminates need to run fuel into driver's compartment. High visibility graphics. Bright, glare-free Transoptic® III lighting. Black matte finish. Requires sending unit page 22. Resistors available for other voltages page 23.



Part No. 82868

**DELUXE
RACING—2⁵/₈"
INSTRUMENTS**

Deluxe Racing—2⁵/₈"

Face Dial Black with graduations and pointers.

Bezel Flat, bright stainless steel.

Case 2⁵/₈" in diameter, steel.

Lighting Internal and self-contained. All models include lighting kits.

Electric Gauges Bi-Torque® mechanisms (90° conventional sweep). Provide long life under heavy vibration. Not affected by changes in ambient temperatures. **Electric pressure, temperature, and fuel level gauges require senders.** Order separately. Pointer rests at random position.

Mechanical Gauges Bourdon tube center-gear mechanisms. Withstand vibration, unaffected by ambient temperature changes.

Mechanical pressure, vacuum gauges require tubing kits. Order separately. Pointer rests below first graduation.

Mounting Brackets, instructions included. Install in S-W mounting accessory panels as well as existing panels.

**AMMETER,
VACUUM**

Part No.
82404
82411

Ammeter 82404 60-0-60.
Vacuum 82411 (mechanical)
2-30" Hg. Requires tubing kits
page 22.



Part No. 82404



Part No. 82411

FUEL

Part No.
82405
82413

Fuel Pressure 82405
(mechanical) 1-15 psi. Requires
tubing kit page 22.

Fuel Level 82413 (12v, neg grd)
Requires sending unit page 20.
Resistors available for other
voltages page 23.



Part No. 82405



Part No. 82413

PRESSURE

Part No.
82406
82407
82408

Oil Pressure 82406 (mechanical)
5-100psi.

82407 (mechanical) 10-150psi.

Air Pressure 82408 (mechanical)
10-150psi.

Require tubing kits page 22.



Part No. 82406



Part No. 82408

TEMPERATURE

Part No.
82409
82410

Water Temperature 82409
(mechanical) 100-265°F. 82409-
60", 82409-72", 82409-144".

Oil Temperature 82410
(mechanical) 140-325° F. 82410-
60", 82410-72". 1/2" adapter incld.

Other adapters available page 21.



Part No. 82409



Part No. 82410

SYMBOL OF

SW

EXCELLENCE

STEWART-WARNER CORPORATION

ALEMITE AND INSTRUMENT DIVISION
1826 DIVERSEY PARKWAY · CHICAGO, ILLINOIS 60614

DELUXE INSTRUMENTS

CATALOG 387
EFFECTIVE MAR. 1986

High Performance
Instruments

DELUXE INSTRUMENTS

Deluxe—2 1/16"

Face Dial Black with white graduations and pointers.

Bezel Flat, bright stainless steel.

Case Gauges are 2 1/16" in diameter, steel. Speeds and tachs are 3 3/8" in diameter, steel or lexan plastic.

Lighting Internal and self-contained. All gauge models include lighting kits.

Electric Gauges Bi-Torque® mechanisms (90° conventional sweep). Provide long life under heavy vibration. Not affected by changes in ambient temperatures. **Electric pressure, temperature, and fuel level gauges require senders.** Order separately. Pointer rests at random position.

Mechanical Gauges Bourdon tube center gear mechanisms. Withstand vibration, unaffected by ambient temperature changes. **Mechanical pressure, vacuum gauges require tubing kits.** Order separately. Pointer rests below first graduation.

Mounting Brackets, instructions included. Install in S-W mounting accessory panels as well as existing panels.

SPEEDOMETERS

Part No.
D-550-BP
82677

Speedometers D-550-BP (mechanical) 0-160mph. Odometer records in miles only. **82677** (mechanical) 5-85mph, 15-130km/h. Odometer records in miles only.



Part No. D-550-BP
Mechanical



Part No. 82677
Mechanical

TACHOMETERS

Part No.
82150
D-997-R
D-535-AH

Tachometers 82150 (12v, neg grd) 0-6000rpm **D-997-R** (12v, neg grd) 0-8000rpm **D-535-AH** (mechanical) 0-9000rpm with shift indicator. 2:1 calibration. Use flexible shaft 44690-1X-42", -72". Check tip.

*Electronic tachometers operate on all OEM ignitions as well as most aftermarket ignitions.



Part No. 82150



Part No. D-997-R



Part No. D-535-AH

PRESSURE

Part No.
82304 82323
82305 82324
82322

Oil Pressure 82304 (12v, neg grd) 5-80psi*
82305 (12v, neg grd) 5-100psi*
82322 (mechanical) 5-80psi
82323 (mechanical) 5-100psi
82324 (mechanical) 10-200psi
Elect. ga. use senders p. 22.
Mech. ga. use tubing kits p. 22.

*Resistors available for other voltages page 23.



Part No. 82304



Part No. 82323
Mechanical

PYROMETER

Part No.
82335

Pyrometer 82335 (12v, neg grd) 300-1500°F. Requires sender 82505. 5' extension wire 82556-1. 10' extension wire 82556-2. 20' extension wire 82556-3. See page 20. Resistor for 24v available see page 23.



Part No. 82335

PRESSURE

Part No.
82120
82121

Drive Oil Pressure 82120
(mechanical) 20-300psi
82121 (mechanical) 25-400psi.
Requires tubing kits page 22.



Part No. 82120



Part No. 82121

PRESSURE

Part No.
82319 82321
82320 82325
 82333

Fuel Pressure 82319 (mechanical) 1-10psi. **82320** (mechanical) 2-30psi. **82325** (mechanical) 10-200psi.
82333 12v neg. grd. 0-16 psi.
Manifold Air Pressure 82321 (mechanical) 2-30psi.
Elec. ga. use sender page 22. Mech. ga. use tubing kits page 22.



Part No. 82319
Mechanical



Part No. 82321
Mechanical

FUEL, VACUUM, TURBO CHARGE

Part No.
82303
82328
82340

Fuel Level 82303 (12v, neg grd)*
Vacuum 82328 (mechanical) 2-30" Hg.
Turbo Gauge 82340 (mechanical) 10-30" Hg/0-15psi.
Use tubing kits page 22.
*Use senders on page 20.



Part No. 82328
Mechanical



Part No. 82303



Part No. 82340

TEMPERATURE

Part No.
82306 82326
82307 82327
82308

Water Temperature 82306 (12v, neg grd) 100-240°F.*
82307 (12v, neg grd) 100-280°F.*
82326 (mechanical) 100-265°F.**
Oil Temperature 82308 (12v, neg grd) 140-320°F.*
82327 (mechanical) 140-325°F.**
*Use senders on page 20.



Part No. 82306



Part No. 82326
Mechanical



Part No. 82327
Mechanical

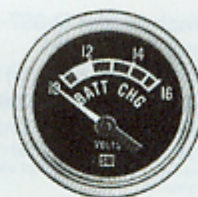
AMMETER, VOLTMETER

Part No.
82309 82311
82310 82313

Ammeters 82310 30-0-30.
82311 60-0-60.
82313 100-0-100.
Voltmeter 82309 (12v, neg/pos grd) 10-16v



Part No. 82310



Part No. 82309

CLOCK

Part No.
82339

Clock 82339 12v, DC. Light kit included. 2 1/16" diameter. Chrome bezel.



Part No. 82339

**Number following indicates length of lead.

82326-48, 82326-60, 82326-72, 82326-96, 82326-120, 82326-144, 82326-216, 82326-288, 82326-360, 82327-60, 82327-72, 82327-96, 82327-144, 82327-216

STAGE 3
INSTRUMENTS

Stage 3 Instruments—2 1/16"

Face Dial Black with white pointer and numerals and yellow and white accents.

Bezel Raised, painted satin black and made of stainless steel.

Case Gauges are 2 1/16" in diameter, steel. Speeds and tachs are 3" in diameter, steel. Steel cases have dichromate coating to resist corrosion.

Lighting Patented Transoptic® III lighting which combines front and back lighting features for improved night-time readability. Lighting kits are included with all gauge models.

Electric Gauges Bi-Torque® mechanisms. Can be mounted at any angle. Not affected by car voltage or by changes in ambient temperature. **Senders are required for electric temperature, pressure, and fuel-level gauges.** Pointer rests at random position.

Mechanical Gauges Bourdon tube Accustat® mechanisms. Withstands heavy vibration. Silicone damped pointer assures steady readings. **Mechanical pressure, vacuum gauges require tubing kits.** Installation material included. Pointer rests below first graduation.

Mounting Gauges come with mounting brackets and instructions. May be installed in all S-W mounting accessory panels as well as in existing panels.

SPEEDOMETERS

Part No.
D-550-EZ
82679

Speedometer D-550-EZ (mechanical) 0-160mph. Odometer reads in miles.
82679 (mechanical) 5-85mph, 15-125km/h. Odometer reads in miles.



Part No. D-550-EZ



Part No. 82679

TACHOMETERS

Part No.
D-997-A
D-997-B

Tachometer D-997-A (12v, neg grd) 0-9000rpm.
997-B (12v, neg grd) 0-7000rpm. See mounting accessory section for 289-A optional housing. Tachometers operate on all OEM ignitions as well as most aftermarket electronic ignition systems.



Part No. D-997-A



Part No. D-997-B

PRESSURE

Part No.
283-D
283-L

Oil Pressure 283-D (mechanical) 5-100psi.**
283-L (12v, neg grd) 0-100psi.*

*Use senders on page 22.
**Use tubing kits on page 22.



Part No. 283-D



Part No. 283-L

TEMPERATURE

Part No.
283-B-72"
283-C-72"
283-J
283-K

Water Temperature 283-B-72"
(mechanical) 100-280°F.*
283-J (12v, neg grd) 100-
280°F.*
283-C-72" (mechanical) 140-
325°F.
283-K (12v, neg grd) 140-
320°F.*

*Use senders on page 20.



Part No. 283-B-72



Part No. 283-J

PRESSURE

Part No.
283-E

Fuel Pressure 283-E
(mechanical) 1-15psi.

*Use tubing kits page 22.



Part No. 283-E

FUEL LEVEL

Part No.
283-M

Fuel Level 283-M (12v, neg grd)

*Use senders on page 20.



Part No. 283-M

AMMETER

Part No.
283-A

Ammeter 283-A 60-0-60.



Part No. 283-A

VACUUM

Part No.
283-F

Vacuum 283-F (mechanical) 2-
30" Hg.

*Use tubing kits page 22.



Part No. 283-F

VOLTMETER

Part No.
283-H

Voltmeter 283-H (12v, neg grd)
10-16v.



Part No. 283-H

HEAVY DUTY
INSTRUMENTS

Heavy Duty Instruments

Face Dial Black with white graduations and pointers.
Bezel Raised, painted satin black. Steel or stainless steel.
Case Gauges are 2 $\frac{1}{16}$ " in diameter, steel. Zinc Dichromate coating resists corrosion. Speeds and tachometers are 3 $\frac{3}{8}$ " in diameter, steel or lexan plastic.

Lighting Internal and self-contained. Lighting kits are included.
Electric Gauges Bi-Torque® mechanisms. Can be mounted at any angle. Not affected by car voltage or changes in ambient temperature. **Electric pressure, temperature, and fuel level gauges require senders.** Order separately. Pointer rests at random positions.

Mechanical Gauges Bourdon tube, Accustat® mechanisms. Silicone damped pointer assures steady readings. Withstands heavy vibration. **Mechanical pressure and vacuum gauges require tubing kits.** Order separately. Pointer rests below first graduation.

Mounting Brackets, instructions included. Install in S-W mounting accessory panels as well as existing panels.

SPEEDOMETERS

Part No.
D-550-HH
82678

Speedometers D-550-HH (mechanical) 0-160mph. Odometer reads in miles.
82678 (mechanical) 5-85mph, 15-125 km/h. Odometer reads in miles.



Part No. D-550-HH
Mechanical



Part No. 82678
Mechanical

TACHOMETERS

Part No.
D-997-J
D-997-K
D-535-AK

Tachometer D-997-J (12v, neg grd) 0-8000rpm.
997-K (12v, neg grd) 0-6000rpm.
D-535-AK (mechanical) 0-9000rpm. 2:1 calibration. Use flexible shaft 446900-1X-42", -72" and appropriate tip.



Part No. D-997-J



Part No. D-535-AK

TEMPERATURE

Part No.
284-AK 284-B36
284-B 284-B72
284-J 284-B144

Water Temperature 284-B (mechanical) 100-265°F.
284-J (12v, neg grd) 100-280°F.*
Cylinder Head Temperature 284-AK (12v, neg grd) 100-600°F. Requires Sender **280-EK**. *Use senders on page 20.



Part No. 284-B
Mechanical



Part No. 284-J



Part No. 284-AK

TEMPERATURE

Part No. 284-C36
284-C 284C-72
284-K 284C-144
82336-96"

Oil Temperature 284-C (mechanical) 140-325°F.
284-K (12v, neg grd) 140-320°F.*
Dual Pressure/Temperature 82336-96" (mechanical) 0-150psi, 110-260°F. *Use senders on page 20.



Part No. 284-C
Mechanical



Part No. 284-K



Part No. 82336-96"

PRESSURE

Part No.

284-AE 284-L
284-D 284-P
284-E 284-AM

Oil Pressure 284-AE (12v, neg grd) 0-80psi.*
284-D (mechanical) 5-100psi.**
284-L (12v, neg grd) 0-100psi.*
284-P (mechanical) 10-200psi.**
Fuel Pressure 284-E (mechanical) 1-15psi.*
284-AM (12v, neg grd) 0-16psi.*

*Use senders on page 22.
**Use tubing kits on page 22.



Part No. 284-D
Mechanical



Part No. 284-L



Part No. 284-E
Mechanical

PRESSURE

Part No.

284-R
284-S

Transmission Pressure 284-R (mechanical) 20-300psi.
284-S (mechanical) 30-400psi.
Use tubing kits on page 22.



Part No. 284-S

**FUEL,
AMMETER,
VOLTMETER**

Part No.

284-A
284-H
284-M

Fuel Level 284-M (12v, neg grd).***Ammeter 284-A** 60-0-60.
Voltmeter 284-H (12v, neg/pos grd) 10-16v.
*Use senders on page 20.



Part No. 284-M



Part No. 284-A



Part No. 284-H

**TURBO GAUGE,
VACUUM**

Part No.

284-AH
284-BF
82301

Turbo Gauge 284-BF 10-30 in. Hg/0-15psi.
Vacuum 284-AH (mechanical) 2-30" in. Hg.
Motor Minder 82301
Use tubing kits on page 22.



Part No. 284-BF



Part No. 284-AH
Mechanical



Part No. 82301

PYROMETER

Part No.

82334

Pyrometer 82334 (12v, neg grd) 300-1500°F. Requires sender 82505. 5' extension wire 82556-1. 10' extension wire 82556-2. 20' extension wire 82556-3. For 24v available see page 23.
*Use senders on page 20.



Part No. 82334

CLOCK

Part No.

82338

Clock 82338 12v, DC. Light kit included. 2 1/16" diameter.



Part No. 82338

ASSEMBLED
GAUGE PANELS

Part No.
82459
830051

Mini-Panel

Includes voltmeter, water temperature, and oil pressure gauge in panel 4 1/8" w by 2" h by 2" d. For water temperature there is 1/8" sender, two adapters: 1/2" and 3/8". For oil pressure 1/8" sending unit, 1/4" adapter, 10mm male female adapters, and 2 3/4" extension. Includes everything needed to install on AMC, Chrysler, Ford, and GM cars. Metric adapters available.
830051 Replacement 3 gauge cluster.



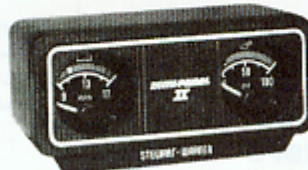
Part No. 82459

ASSEMBLED
GAUGE PANELS

Part No.
82470
832863

Mini-Panel II

Voltmeter and oil pressure gauge encased in a panel 4 1/8" w by 2" d. For oil pressure there is 1/8" sending unit, 1/4" adapter, 10mm male female adapters, 12mm male adapter, 14mm male adapter, 1/8"-28 Pt Japanese metric adapter and 2 3/4" extension. Includes everything needed to install on AMC, Chrysler, Ford, GM, and import cars.
832863 Replacement 2 gauge cluster.



Part No. 82470

ASSEMBLED
GAUGE PANELS

Part No.
82465
82466
82467
82468
82469

World Wide Single Gauge Panels

Single gauge housing kit. Single hole die cast housing with socket and lamp. Kit includes all parts for complete mounting.

Part No. 82465 Consists of 60-0-60 ammeter.

Part No. 82466 Consists of 10-16v voltmeter.

Part No. 82467 Consists of 100-280° electric water temperature gauge. Includes 1/2" and 3/8" adapter and 1/8" water temperature sender.

Part No. 82468 Consists of 10-100psi mechanical oil pressure gauge. Includes four adapters for oil pressure: 1/8"-27, 1/4"-18, 10mm male, and 10mm female. Also 6' of nylon pressure tubing and required hardware for mechanical oil pressure gauge installation.

Part No. 82469 Consists of 2-30" Hg mechanical vacuum gauge. Includes T fitting and 6' of rubber tubing.



Part No. 82465

Part No. 82466



Part No. 82467



Part No. 82469

Part No. 82468

ASSEMBLED
GAUGE PANELS

Part No.
82463
82464

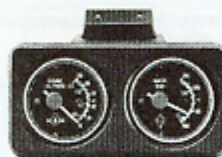
2-Gauge World Wide Panel

Part No. 82464 2-gauge housing kit consists of 100-280° electric water temperature gauge and 10-100psi mechanical oil pressure gauge in a two-hole housing with sockets and lamps. Includes 1/2" and 3/8" adapters and a 1/8" water temperature sender. Includes four adapters for oil pressure: 1/8"-27, 1/4"-18, 10mm male, and 10mm female. Also 6' of nylon pressure tubing and required hardware for mechanical oil pressure gauge installation. Kit includes parts for complete mounting.

Part No. 82463 2-gauge housing kit consists of 10-100psi mechanical oil pressure gauge and 60-0-60 ammeter in a two-hole housing with sockets and lamps. Includes four adapters for oil pressure: 1/8"-27, 1/4"-18, 10mm male, and 10mm female. 6' of nylon pressure tubing and required hardware for mechanical oil pressure gauge installation. Kit includes all parts for complete mounting.



Part No. 82463



Part No. 82464

ASSEMBLED GAUGE PANELS

Part No. 82462

3-Gauge World Wide Panel

Housing kit consists of 100-280° electric water temperature gauge, 10-100psi mechanical oil pressure gauge, 10-16v voltmeter in three-hole housing with sockets and lamps. Includes 1/2" and 3/8" adapters for water temperature along with 1/8" temperature sender. Four adapters for oil pressure: 1/8"-27, 1/4"-18, 10mm male, and 10mm female. Also 6' of nylon pressure tubing and hardware for mechanical oil pressure gauge installation. Kit includes parts for mounting.



Part No. 82462

SPECIAL GAUGES

Part No. 82301 82460

Motor Minder

Features Accustat® mechanism for monitoring vacuum to check mechanical condition of engine for maximum fuel economy. **Part No. 82460** Self-contained gauge in one piece housing. Kit includes gauge vacuum tubing and T fitting connector. **Part No. 82301** Includes a 2 1/16" diameter panel mount gauge with black bezel, vacuum tubing, and T fitting connector.



Part No. 82301

SPECIAL GAUGES

Part No. 284-BF 82461

Turbo Gauge

Single instrument monitors turbo boost pressure, engine vacuum. **Part No. 82461** Self-contained in black one piece housing with transoptic lighting for night time illumination. Equipped with vacuum tubing and installation hardware. **Part No. 284-BF** Same as **Part No. 82461** except for 2 1/16" zinc dichromate steel case for panel mounting. Light kit included. Tubing kit 82553 order separately, page 22.



Part No. 284-BF

ELECTRIC TACHOMETERS

Part No. 82638

Electric Tachometer dash or column mounted

0-9000rpm, 3 1/4" diameter. Bi-Torque® mechanism provides accuracy, instant needle response. Movable red line monitors over-, under-revving. Easy-to-read bold numerals and hash marks. Operates on 4, 6, 8 cylinder vehicles with OEM conventional and electronic ignition system. 12v, neg grd. Wide 280° needle sweep. Pointer rests in random position when not energized.



Part No. 82638

ELECTRIC TACHOMETERS

Part No. 82618

Electric Tachometer dash or column mounted

0-8000rpm, 3 1/2" diameter. Bi-Torque® mechanism provides accuracy, instant needle response. Shock resistant, designed for heavy duty applications. Operates on all 4, 6, 8 cylinder vehicles with OEM conventional and electronic ignition systems. 12v neg grd. Pointer rests in random position when not energized. Complete installation instructions.



Part No. 82618

ELECTRIC TACHOMETERS

Part No. 82628

Mini-Tach dash or column mounted

0-8000rpm, 2 1/2" diameter. Small enough (3 1/2" high) to mount on dash. Easy-to-read face dial with adjustable shift indicator. Bi-Torque® mechanism combines with solid state circuitry for durability. Operates on 4, 5, 6, 8 cylinder engines with OEM conventional and electronic ignition system. 12v neg grd. Complete installation instructions. Kit includes tachometer, exclusive power module, wires, connectors, terminal ends, and mounting hardware.



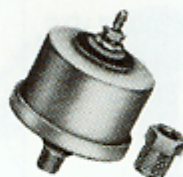
Part No. 82628

PRESSURE SENDERS, TUBING KITS, ADAPTERS

Part No.
279-A 82504
279-B

Senders for Electric Pressure Gauges

Dial Scale	Voltage	Part No.
0-16	12v	82504
0-80	12v	279-A
0-100	12v	279-B



Part No. 279-A

PRESSURE SENDERS, TUBING KITS, ADAPTERS

Part No.
366-HM
82553

Tubing Kits for Pressure Gauges

Install mechanical vacuum and oil pressure gauges with 1/8" PT connection **82553**. Contains coupling with 1/8" int PT, 6 feet 1/8" nylon tubing, coupling with 1/8" ext PT, adapter for 1/4" PT oil gallery, instructions.

Part No. **366-HM** Includes 16' of tubing for rear engine cars.



Part No. 82553
Part No. 366-HM

PRESSURE SENDERS, TUBING KITS, ADAPTERS

Part No.
82562

Rubber Tubing Kit for Vacuum Gauges

For installing any S-W vacuum gauge or motor minder in most applications. Kit contains 6' of rubber vacuum tubing, "T" fitting connector, gauge vacuum hose fitting.



Part No. 82562

PRESSURE SENDERS, TUBING KITS, ADAPTERS

Part No.
366-FK
366-SX
366-SY

Replacement Lighting Kits

Gauge Series	Size	Individual Mount	
		Metal Panel	Non-Metallic Panel
Heavy Duty Deluxe	2 1/16"	366-FK	366-FK
Amps	2 1/16" & 2 5/16"	366-FK	366-SX
Other gauges	2 1/16" & 2 5/16"	366-FK	366-FK
World Wide	2 1/16"	366-FK	366-FK
Stage III	2 1/16"	366-SY	366-SY
Competition	2 1/16" & 2 5/16"	366-FK	366-FK



Part No. 366-FK

RESISTORS, SWITCHES, WARNING SIGNALS

Part No.
363 Series

Temperature Switches for Warning Lights

Temperature	Thread	1/4"	3/8"	1/2"
		200°	D-363-D	D-363-E
225°	D-363-AM	—	D-363-G	
250°		—	D-363-W	



Part No. 363 Series

RESISTORS,
SWITCHES,
WARNING
SIGNALS
Part No.
829525-2
829525-8
829525-9

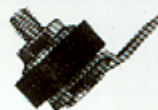
Resistors for Special Voltages

For 12v gauge with Bi-Torque® mechanisms (including HD, Deluxe, Stage III and Competition).

Part No. 829525-2 To adapt 12v gauge to use with 24v DC power.

Part No. 829525-8 To adapt 12v gauge to use with 32v DC power.

Part No. 829525-9 To adapt 12v pyrometer to 24v DC power.



Part No. 829525-2

RESISTORS,
SWITCHES,
WARNING
SIGNALS

Part No.
364 Series

Pressure Switches for warning lights

	6 lb	15 lb
1/8"	D-364-L	D-364-K
1/4"	D-364-M	



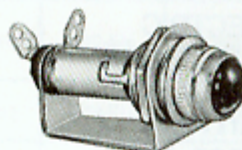
Part No. 364 Series

SIGNAL
LIGHT

Part No.
D-420125

Signal Light

Use with any pressure or temperature switch 420125 for 12v systems.



Part No. D-420125

FLEXIBLE
SHAFTS FOR
TACHOMETERS

Part No.
446900-1X-42"
446900-1X-72"

**Flexible Shafts for Tachometers
446900-1X**

Drive tips available. One required for each shaft.

Size	Distributor	Part No.
.104 sq	Accel, Delco, Mallory	818749
.152 tang	Mopar, Malo	818750
.187 tang	Mallory, Vertex	817769

ANGLE
ADAPTERS

Part No.
407010
411335

Right Angle Adapters

Attached to connection on back of tachometer to change direction of shaft connection. 1:1 ratio. Drive end: .104" sq. tip. Driven end: .105" sq. hole.

Part No. 407010 Direct rotation.

Part No. 411335 Reverse rotation.



Part No. 407010

**AV WARNING
SYSTEMS**

Part No.
366-TJ
D-825104

**Audio-Visual Engine Warning
Systems**

High intensity cold cathode diode light and buzzer warn of impending high engine water temperature and/or low oil pressure. Unit sounds and lights each time the engine is started until oil pressure builds up and at any time water temperature is excessive. Shock and vibration resistant. Mounts in panel to 1/2" thick.

Part No. 825104 Warning device only for use separately with any switch to detect low pressure, low fluid, brake failure, etc. Reacts to multiple or individual switches. Also order extra warning device when oil pressure and water temperature warnings are to be separately signaled.

Part No. 366-TJ Complete kit includes 364-L oil pressure sender switch, 363-F water temperature sender switch, 825104 warning device, nameplate, and four 1/4" speed grip electrical connectors.



Part No. D-825104

**ELECTRIC
FUEL PUMPS**

Part No.
D-235-A
D-235-B
82050
82051
82052
82053
82054
82058

Electric Fuel Pumps

Pumps assure quick starts, eliminate surging, flooding, and starving. All pumps assure battery-saving quick starts by delivering gas the instant the ignition switch is turned on.

82050 SERIES Powerful piston-type pump brings solid state reliability to fuel pumps. One moving part. Built-in filters eliminate need for other filters in line: microbon filter dissipates water; magnetic filter traps metallic particles. Gas line connection: 1/4" internal PT.

Part No. 82050 12v, neg grd. 7psi.

Part No. 82051 12v, neg grd. 5psi.

Part No. 82052 12v, pos/neg grd. Double insulated. 7psi.

Part No. 82054 24v, pos/neg grd. 7psi.

Part No. 82053 Filter element for 82050 series pumps for gasoline.

Part No. 82058 Filter element for Diesel Fuel.

235 SERIES Built-in screen. Gas line connection: 1/8" internal PT. Not to be used with alcohol based fuels.

Part No. 235-A 12V, pos/neg grd. 5psi.

Part No. 235-B 6v, pos/neg grd. 5psi.

Application Chart

Part No.	Engine HP	Delivery*	
		1psi	3psi
235-A	up to 225	26	11
235-B	up to 150	18	9
82050	up to 350	34	29
82051	up to 350	31	24
82052	up to 350	31	24

*Gals per hour per S-W lab test procedure.



Part No. 82050



Part No. D-235-B

**ELECTRIC
FUEL PUMPS**

Part No.
M-4012

Safety Switch

Single pole, double throw pressure switch can be wired into electrical system to shut off the fuel pump when engine oil pressure drops below 4psi. Pump would be shut off if the engine stopped running for any reason, even though the ignition switch remained on.



Part No. M-4012

Gauge Sender Application Chart

Engine Mfg.	Engine	Normal Oil psi @ 2000	Oil Sender/Adapter			Temp Sender/Adapter			Drain Plug	
			0-90 (12v)	0-100 (12v)	Mechanical	100-280 (12v)	140-320 (12v)	Mechanical	140-320 (12v)	100-280 (12v)
DOMESTIC 1967-1982										
AMC	All	46	279-A	279-B	82553	280-ED	280-EE	N/A	280-EH	82508
	Exc 121-4	28	82555 279-A	82555 279-B	82555 82553	82510	N/A	N/A	—	—
	Exc 151-4		See Pontiac Div General Motors							
Chrysler	105-4	60-90	N/A	82555 279-B	82555 82553	280-ED	280-EE	N/A	N/A	82510
	135-4	50	279-A	279-B	82553	280-ED	280-EE	72446	280-EH	82508
	156-4	56	279-A	279-B	82553	280-ED	280-EE	72446	N/A	82510
	225-6 318-8 360-8	35-65	279-A	279-B	82553	280-ED	280-EE	72446	280-EH	82508
	400-8 440-8	30-80	N/A	279-B	82553	280-ED	280-EE	72446	280-EH	82508
Ford	98-4	40	279-A	279-B	82553	280-ED	280-EE	72446	N/A	82510
	140-4	40-60	279-A	279-B	82553	280-ED	280-EE	72446	280-EH	82508
	171-6	40-60	279-A	279-B	82553	280-ED	280-EE	72446	—	82510
	200-6	30-50	279-A	279-B	82553	280-ED	280-EE	72446	280-EH	82508
	238-6	—	279-A	279-B	82553	280-ED	280-EE	72446	—	82510
	250-6 255-8 302-8	40-60	279-A	279-B	82553	280-ED	280-EE	72446	280-EH	82508
	351-8; 400-8	40-75	279-A	279-B	82553	280-ED	280-EE	72446	280-EH	82508
	460-8	35-65	279-A	279-B	82553	280-ED	280-EE	72446	280-EH	82508
Buick	196-6 231-6 252-6 350-8	37 @ 2400	279-A	279-B	82553	280-ED	280-EE	Not Req	280-EH	82508
Cadillac	250-8 368-8 425-8	35	279-A	279-B	82553	280-ED	280-EE	Not Req	280-EH	82508
Chevy	1.4L-4 97.6-4	34-36	279-A	279-B	82553	280-ED	280-EE	Not Req	280-EH	82508
	97.6-4(78-82)	55	279-A	279-B	82553	280-ED	280-EE	Not Req	280-EH	82508
	111-4-D	—	82561 279-A	82561 279-B	82561 82553	280-ED	280-EE	72446	—	82510
	112-4	—	279-A	279-B	82553	280-ED	280-EE	72446	280-EH	82508
	140-4	27-41	279-A	279-B	82553	280-ED	280-EE	Not Req	280-EH	82508
	173-6	30-45	279-A	279-B	82553	280-ED	280-EE	Not Req	280-EH	82508
	229-6 250-6 267-8 305-8 350-8 400-8	40-45	279-A	279-B	82553	280-ED	280-EE	Not Req	280-EH	82508
Olds	260-8 263-8	40 —	279-A 279-A	279-B 279-B	82553 82553	280-ED 280-ED	280-EE 280-EE	Not Req 72446	280-EH 280-EH	82508 82508
	307-8 350-8 350-8-D 403-8	40 40 37 @ 1500 40	279-A	279-B	82553	280-ED	280-EE	Not Req	280-EH	82508
Pontiac	151-4 265-8 301-8 400-8	38 @ 2400 40 37-40 @ 2600 55-60 @ 2600	279-A	279-B	82553	280-ED	280-EE	Not Req	280-EH	82508

IMPORTS 1975-1982

Chevy Luv	1800 cc	—	82561 279-A	82561 279-B	82561 82553	82510	—	N/A	N/A	N/A
Datsun	All	—	82561 279-A	82561 279-B	82561 82553	82510	—	N/A	N/A	N/A
Fiat	All	—	366-ST 279-A	366-ST 279-B	366-ST 82553	82510	—	N/A	N/A	N/A
Ford Courier	1800 cc	—	82561 279-A	82561 279-B	82561 82553	82510	—	N/A	N/A	N/A
Ford Fiesta	1600 cc	—	279-A	279-B	82553	N/A	N/A	N/A	N/A	N/A
Honda	All	—	82561 279-A	82561 279-B	82561 82553	82510	—	N/A	N/A	N/A
Mazda	All Except RX-7	—	82561 279-A	82561 279-B	82561 82553	280-ED	—	72446	N/A	82510
Subaru	All	—	82561 279-A	82561 279-B	82561 82553	82510	—	N/A	N/A	N/A
Toyota	All	—	82561 279-A	82561 279-B	82561 82553	82510	—	N/A	N/A	82510
Volvo	4 cyl	—	N/A	82555 279-B	82555 82553	N/A	N/A	N/A	N/A	N/A
	6 cyl	—	N/A	N/A	N/A	N/A	N/A	N/A	N/A	N/A
VW	All	—	N/A	82555 279-B	82555 82553	82510	—	N/A	N/A	82510
Mitsubishi	All	—	82561 279-A	82561 279-B	82561 82553	82510	—	N/A	N/A	82510

**CHROME
PANELS**

- Part No.**
D-811653
D-811659
D-813642
D-813877
D-813878
D-814143
D-817825

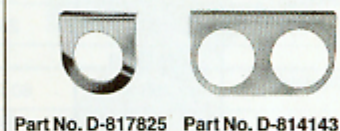
**Bright Chrome and Striped Chrome
Steel Panels**

For 2 1/16" and 2 1/32" diameter gauges.

Part No.	No. of Gauges	Panel Finish	Lighting Bracket
D-817825	1	bright	no
D-814143	2	bright	yes
D-811653	3	bright	yes
D-813878	4	bright	yes

For 2 5/8" diameter gauges

Part No.	No. of Gauges	Panel Finish	Lighting Bracket
D-811659	1	striped	no
D-813877	2	bright	no
D-813642	3	bright	no



Part No. D-817825 Part No. D-814143



Part No. D-811653

**DIE CAST
PANELS**

- Part No.**
289-B 289-D
289-C

Die Cast Panels black or wood grain

Suede black finish, die cast panel used with all gauge lines except 2 5/8" diameter gauges. Wood grain adhesive panel overlay is provided.

- Part No. 289-B** 1-hole panel and overlay
Part No. 289-C 2-hole panel and overlay
Part No. 289-D 3-hole panel and overlay



Part No. 289-C



Part No. 289-D

**NORYL®
PANELS**

- Part No.**
286-A
287-A
288-A
288-F
824425

Noryl® Panels

High impact Noryl® black plastic. Minimum flat area required for mounting.

Part No. 287-A 2-Hole Housing Used with all gauge lines except standard/custom 2 1/32" diameter gauges. Gauges can be rotated 360° and modules mounted in any direction. (Stage 1 gauges require lamp/socket kit 336-SW.)

Part No. 286-A 3-Hole Housing Used with all gauge lines except standard/custom 2 1/32" and 2 5/8" diameter gauges. Gauges can be rotated 360° and modules mounted in any direction.

Part No. 288-A Module mounting kit used with Stage 3 heavy-duty 2 1/16" diameter deluxe gauges. Includes mounting foot.

Part No. 288-F Same as 288-A except without mounting foot.

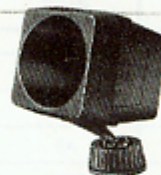
Part No. 824425 Replacement brace bracket for 2- and 3-hole panels.



Part No. 286-A



Part No. 287-A



Part No. 288-A

**HOUSINGS &
MOUNTINGS**

- Part No.**
289-A
366-MP

Housings & Mountings

Part No. 289-A Mounting Tachometer Housing For use with 997-A or 997-B tachometer. (NOTE: Tachometer illustrated assembled in mounting.)

Part No. 366-MP Cup Mounting Kit Black crinkle finish. Includes cup, base, clamp, strap, and hardware. For 2 5/8" diameter gauges.



Part No. 289-A

SYMBOL OF



EXCELLENCE

STEWART-WARNER

High Performance Instruments Cr



TRACK & ROAD






WORLD WIDE



GAUGE TYPE	DIAL SCALE	AVAILABLE				DIAL SCALE	AVAILABLE		DIAL SCALE
		2 1/16" DIA.		2 5/8" DIA.			2 1/16" DIA.		
		MECH.	ELEC.	MECH.	ELEC.		MECH.	ELEC.	
AMMETERS	60-0-60		82855		82805	30-0-30 60-0-60 100-0-100	82713 82700 82701	30-0-30 60-0-60 100-0-100	
VOLTMETERS	10-16 12V.		82862		82812	10-16 12V. 20-32 24V.	82709 82716	10-16 12V.	
PRESSURE	1-15 psi 0-16 5-100 0-100 10-200	82856 82857 82858	82868 82865	82806 82807 82808		5-100 psi 10-150 20-300	82704 82710 82717	1-10 p 1-15 0-16 5-80 5-100 10-150 25-400	
DUAL AIR PRESSURE								10-150/ 10-150	
TEMPERATURE	100-280° 100-265 140-320 140-325	82859 82860	82866 82867	82809 82810		100-220° 100-265 100-280 150-350	82703 82702 82706	100-240 100-265 100-280 140-320 140-325	
PYROMETERS								300-1500	
CYLINDER HEAD									
PRESSURE/VACUUM									
TURBO BOOST (Panel or Pedestal)	15 PSI 0-30"	82864		82814				15 PSI 0-30"	
PRESSURE/TEMPERATURE									
VACUUM	2-30"	82861		82811		2-30"	82718	2-30"	
FUEL			82863		82813		82712		
MOTOR MINDER (Panel or Pedestal)									
CLOCKS									
TACHOMETERS	10,000 10,000/W Tell Tale	3 3/8" DIA.		5" DIA.		6000	3 3/8" DIA.		6000 8000 9000
		82851	82850	82801	82800		82616		
SPEEDOMETER	0-160	3 3/8" DIA.				0-80	3 3/8" DIA.		5-85 0-160
		82852					82680		

Products Cross Reference Guide

WORLD WIDE		 DELUXE				 HEAVY DUTY				 STAGE III			
		AVAILABLE 2 1/16" DIA.		AVAILABLE 2 1/16" DIA.		AVAILABLE 2 5/8" DIA.		AVAILABLE 2 1/16" DIA.		AVAILABLE 2 1/16" DIA.		AVAILABLE 2 1/16" DIA.	
H.	ELEC.	DIAL SCALE	MECH.	ELEC.	MECH.	ELEC.	DIAL SCALE	MECH.	ELEC.	DIAL SCALE	MECH.	ELEC.	
	82713 82700 82701	30-0-30 60-0-60 100-0-100		82310 82311 82313		82404	60-0-60 60-0-60 100-0-100 150-0-150		284-A 284-AB 284-AA 284-AD	60-0-60		283-A	
	82709 82716	10-16 12V.		82309			10-16 12V. 20-32 24V.		284-H 284-AJ	10-16 12V.		283-H	
	82705 82711	1-10 psi 1-15 0-16 5-80 5-100 10-150 25-400	82319	82333	82405		1-15 psi 0-16 5-80 5-100 10-150 20-300 25-400	284-E	284-AM 284-AE 284-L 284-T	1-15 psi 5-100		283-E 283-D	
		10-150/ 10-150	82332				10-150/ 10-150	82331					
	82708	100-240° 100-265 100-280 140-320 140-325	82326	82306	82409		100-230° 100-265 100-280 140-320 140-325	284-AF 284-B	284-J 284-K	100-280° 100-280 140-320 140-325	283-B	283-J 283-K	
	82702 82706	100-280 140-320 140-325	82327	82307 82308	82410		140-320 140-325	284-C			283-C		
		300-1500°		82335			300-1500°		82334				
							100-600		284-AK				
							40 PSI-0-30"	284-F					
		15 PSI 0-30	82340				15 PSI-0-30"	284-BF					
							0-150, 110-260°	82336					
		2-30"	82328		82411		2-30"	284-AH		2-30"	283-F		
	82712			82303		82413			284-M			283-M	
								82301					
									82338				
3/8" DIA.			3 3/8" DIA.					3 3/8" DIA.			3" DIA.		
	82616	6000 8000 9000		82150 997-R			6000 8000 9000		997-K 997-J	7000 9000		997-B 997-A	
			535-AH					535-AK					
3/8" DIA.			3 3/8" DIA.					3 3/8" DIA.			3" DIA.		
		5-85 0-160	82677 550-BP				0-85 0-160	82678 550-HH		5-85 0-160	82679 550-EZ		

Part Number/Page Index

Part Number	Page	Part Number	Page	Part Number	Page	Part Number	Page
D-235-A	24	D-363-W	22	82305	12	82562	22
D-235-B	24	364	23	82306	13,20	82618	19
279-A	22,25	D-364-K	23	82307	13,20	82628	19
279-B	22,25	D-364-L	23	82308	13,20	82638	19
280-EA	20	D-364-M	23	82309	13	82677	12
280-ED	20,25	366-FK	22	82310	13	82678	16
280-EE	20,25	366-HM	22	82311	13	82679	14
280-EH	20,25	366-LP	20	82313	13	82800	5
283-A	15	366-MP	26	82319	13	82801	5
283-B-72"	15	366-ST	21,25	82320	13	82805	6
283-C-72"	15	366-SX	22	82321	13	82806	6
283-D	14	366-SY	22	82322	12	82807	6
283-E	15	366-TJ	24	82323	12	82808	6
283-F	15	D-385-B	20	82324	12	82809	6
283-H	15	D-385-C	20	82325	13	82810	6
283-J	15,20	D-391-A	20	82326	13	82811	6
283-K	15,20	D-391-B	20	82327	13	82812	7
283-L	14	D-391-C	20	82328	13	82813	7
283-M	15	D-391-D	20	82333	13	82814	7
284-A	17	M-4012	24	82334	17	82850	7
284-AE	17	407010	23	82335	12	82851	8
284-AH	17	411335	23	82336-96"	16	82852	8
284-AK	16	412208	21	82338	17	82853	8
284-AM	17	D-420125	23	82339	13	82854	8
284-B36	16	428819	21	82340	13	82855	8
284-B72	16	446900-1X-42"	23	82404	11	82856	9
284-B144	16	446900-1X-72"	23	82405	11	82857	9
284-C36	16	D-535-AH	12	82406	11	82858	9
284C-72	16	D-535-AK	16	82407	11	82859	9
283C-144	16	D-550-BP	12	82408	11	82860	9
284-D	17	D-550-EZ	14	82409	11	82861	9
284-E	17	D-550-HH	16	82410	11	82862	10
284-H	17	72446	21,25	82411	11	82863	10
284-J	16,20	D-811653	26	82413	11	82864	10
284-K	16,20	D-811659	26	824425	26	82865	9
284-L	17	D-813642	26	82459	18	82866	9,20
284-M	17	D-813877	26	82460	19	82867	10,20
284-P	17	D-813878	26	82461	19	82868	10
284-R	17	D-814143	26	82462	19	829525-2	23
284-S	17	817769	23	82463	18	829525-8	23
284-BF	17,19	D-817825	26	82464	18	829525-9	23
286-A	26	818749	23	82465	18	830051	18
287-A	26	818750	23	82466	18	832863	18
288-A	26	82050	24	82467	18	D-977-R	12
288-F	26	82051	24	82468	18	D-997-A	14
289-A	26	82052	24	82469	18	D-997-B	14
289-B	26	82053	24	82470	18	D-997-J	16
289-C	26	82054	24	82504	22	D-997-K	16
289-D	26	82058	24	82505	20	D-997-R	12
363	22	82120	13	82508	25		
D-363-AM	22	82121	13	82510	21,25		
D-363-D	22	82150	12	D-825104	24		
D-363-E	22	82301	17,19	82553	22,25		
D-363-F	22	82303	13	82555	21,25		
D-363-G	22	82304	12	82561	21,25		

NOTE: This is a computer generated index and follows basic chronological order. To find your part number start with the first digit, 1, 2, 3 etc., then the number of digits. Alphabetical suffix are in alphabetical order. If your number starts with an alphabetical prefix, these numbers are listed separately alpha/numerical order.

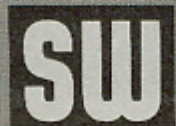
DISTRIBUTION AND SERVICE CENTERS

- Atlanta, Georgia**
5246 Snopfinger Woods Drive
Decatur, Ga. 30032
(404) 981-2770
- Baltimore/Washington, D.C.**
Phone (301) 252-9300
Sales • Service • Warehouse
23 W. Zylsbury Rd.
Balt. (Trenton), Md. 21063-0187
- Billings, Montana 59102**
811 2nd Ave. N.
(406) 259-4788
- Birmingham, Alabama 35210**
4727 Alton Court
(205) 956-0105
- Boston, Massachusetts**
110 Shawmut Rd.
Canton, MA 02021
(617) 828-6030
- Buffalo, New York**
2500 Walden Ave.
Cheektowaga, N.Y. 14225
(716) 685-3950
- Charlotte, North Carolina 28208-3807**
2900 Interstate St.
(704) 394-0126
- Chicago, Illinois**
9050 Ivanhoe St.
Schiller Park, Illinois 60176
(312) 671-1390 (Schiller Pk.)
(312) 599-1550 (Chicago)
- Cincinnati, Ohio 45223**
4046 Hamilton Ave.
(513) 681-2323
- Cleveland, Ohio**
25971 Cannon Rd.
Bedford Heights, Ohio 44146
(216) 439-7965
- Cleveland Ignition Co.**
10646 Leuser Ave.
Cleveland, Ohio 44108
(216) 851-8000
(instruments only)
- Dallas, Texas 75229**
2525-320 Royal Lane
(214) 241-7777
- Denver, Colorado 80223**
1001 W. Arizona Ave.
(303) 744-3471
- Des Moines, Iowa 50313**
5694 N.E. 17th St.
(515) 266-3164
- Detroit, Michigan**
1009 W. Maple Rd.
Crawson, Mich. 48017
(313) 435-2200
- El Paso, Texas 79925**
1220 Airway Blvd.
(915) 778-3366
- Houston, Texas 77036**
7540 Harwin Dr.
(713) 780-3370
- Indianapolis, Indiana 46219**
2951 N. Webster Ave.
(317) 547-5295
- Jacksonville, Florida 32205**
1057 Ellis Rd. North
Bay #7
P.O. Box 60549 (32236)
(904) 783-0600
- Kansas City, Missouri 64120**
6004 Connecticut Ave.
(816) 483-9856
- Los Angeles, California 90015**
333 W. Washington Blvd.
(213) 748-0261
- Louisville, Kentucky 40208**
1475 S. Floyd St.
(502) 637-4707
- Memphis, Tennessee 38105**
2315 So. Elvis Presley Blvd.
(901) 942-3257
- Milwaukee, Wisconsin**
2720 So. 163rd St.
New Berlin, Wis. 53151
(414) 786-1645
- P.E. Weber Inc.**
738 N. 8th St., 53233
(414) 276-8140
(instruments only)
- Minneapolis, Minnesota 55413**
740 Northeast Harding St.
(612) 331-8464
- Nashville, Tennessee 37216**
1650 Elm Hill Pike Suite #6
(615) 871-0230
- New Orleans, Louisiana**
5620 Salmon St.
Harahan, La. 70123
(504) 733-6133
- New York/New Jersey**
N.Y. (212) 349-4050
N.J. (201) 687-1100
Sales • Service • Warehouse
1490 Ridgeway St.
Union, New Jersey 07083
- Omaha, Nebraska 68137**
10501 1st Street
(402) 339-7900
- Philadelphia, Pennsylvania 19123**
930 N. Eighth St.
(215) 922-5430
- Phoenix, Arizona 85005**
2112 N. 23rd Ave.
(602) 258-6721
- Pittsburgh, Pennsylvania**
1650 Main St.
Sharpsburg, Pa. 15215
(412) 782-4495
- Speedometer Service Co.**
4740 Baum Blvd., 15213
(412) 621-2800
(instruments only)
- Portland, Oregon 97210**
3323 N.W. Yeon Ave.
(503) 227-3501
- St. Louis, Missouri 63114**
1805 Bell Way Drive
(314) 428-9907
- Salt Lake City, Utah**
4425 S. 500 West, Suite C
Murray, UT 84123
(801) 261-5111
- San Antonio, Texas 78207**
7523 N. Laredo
(512) 736-6666
- S. X. Callahan Co.**
824 S. Laredo 78207
(512) 224-1625
(instruments only)
- So. San Francisco, Cal. 94080**
183 Beacon St.
(415) 583-4500
- Seattle, Tukwila, Wash. 98168**
12604 1/2 Inman Ave. South
(206) 433-0804
- Toledo, Ohio**
Toledo Auto Electric Inc.
1717 Monroe St. 43624
P.O. Box 737 43601
(419) 243-7104
(instruments only)
- Tulsa, Oklahoma 74145**
7630 E. 48th St.
(918) 663-3700

INTERNATIONAL OFFICES AND FACILITIES

- Australia, Brookvale, N.S.W. (2100)**
Aerite Lubquip Pty. Ltd.
2 William Street
- Canada, Belleville, Ontario K8N 5B8**
Stewart-Warner Corp. of Canada, Limited
349 MacDonald Avenue
- England, Tyne & Wear—NE29-7UE**
Stewart-Warner Ltd.
West Chilton Trading Estate
North Shields
- Germany, Hilden (401)**
Stewart-Warner, Alternate GmbH
Stockhausstrasse 9
- Mexico, Monterrey, N.L.**
Industrial Annex, S.A.
Tapia 836 Oriente

SYMBOL OF



EXCELLENCE

**STEWART-WARNER
INSTRUMENTS**

STEWART-WARNER CORPORATION

1826 DIVERSEY PARKWAY - CHICAGO, ILLINOIS 60614